

3 - CEO Message
4 - Cover Story

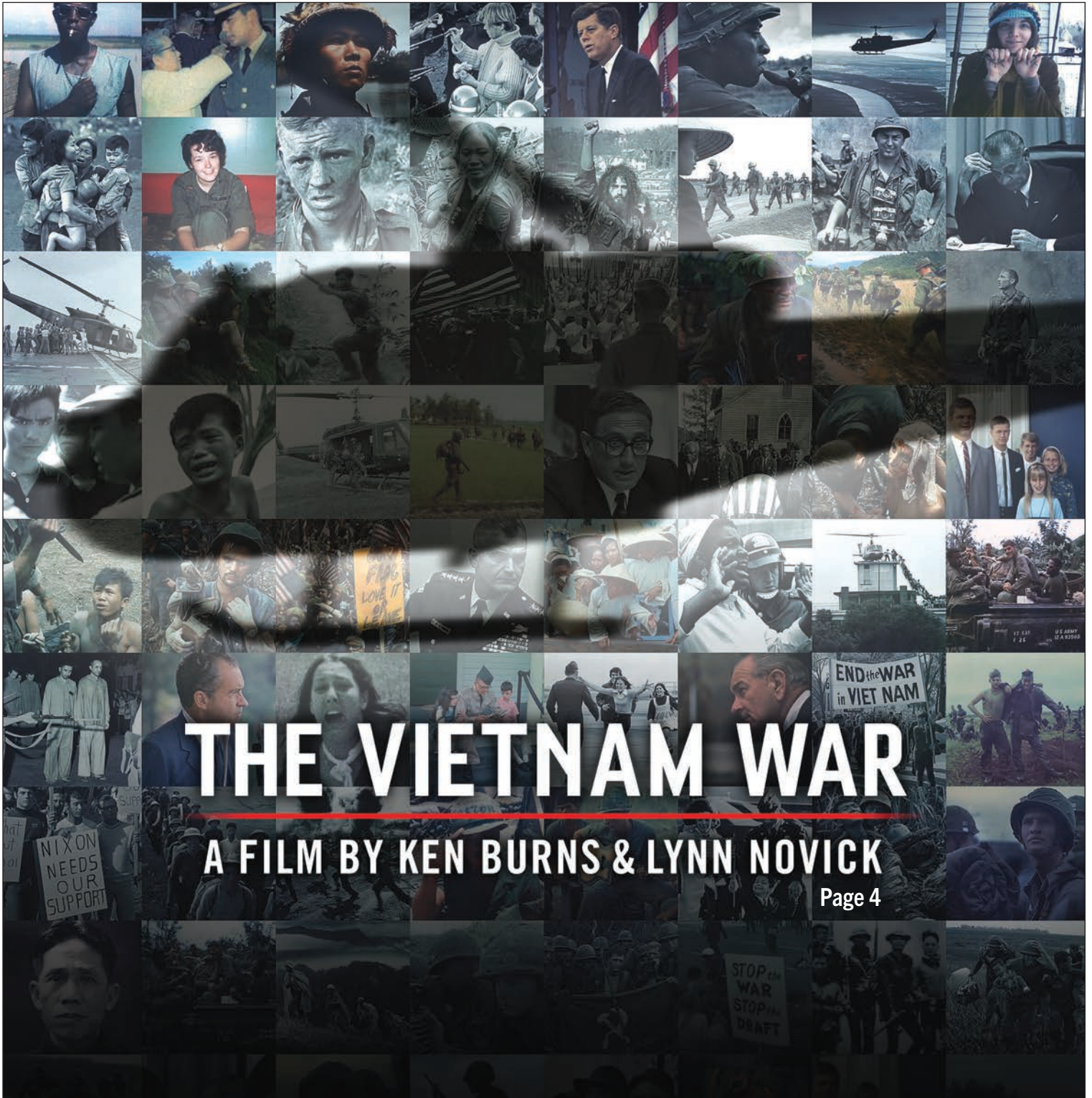
6 - TV Listings
10 - Evening Grid
17 - Daytime Grid

18 - Partner Profile



PBS HAWAII

PROGRAM GUIDE SEPTEMBER 2017 VOL. 36 NO. 9



THE VIETNAM WAR

A FILM BY KEN BURNS & LYNN NOVICK

Page 4

The American Flag, A Fellow Warrior

Honolulu attorney **Allen Hoe**, pictured here holding his American flag, served as a combat medic during the Vietnam War. Hoe said he found this flag in 1967 at a Vietnamese tailor shop right outside an Army base. "I carried it with me in Vietnam," Hoe said. "Then in 1968 on Mother's Day, when I lost all of those buddies [about 18 troops in his unit were killed; several more were captured and held prisoner], it became extra special because a bunch of our guys were still MIA."

In 2005, Hoe's son, Nainoa, served in the Iraq War. Nainoa told his comrades about his father's service in Vietnam. Hoe said, "I was so proud to hear that my son's generation of soldiers got it and they understood the meaning of what they were doing and why they were doing it. So I sent [the flag] to Nainoa." Hoe's son was



carrying the flag the day he was killed in combat.

"When I go and share my stories with soldiers and different organizations, I pass the flag around and tell them this flag has lots of spirit and mana, so I want them to hold it and take some of its spirit and give it some of their spirit. For me, this flag is as much a warrior as any of them wearing the uniform."

Hoe's story, and stories from other Vietnam War veterans in Hawai'i, will air before each episode of **The Vietnam War**, the 10-part documentary by filmmakers Ken Burns and Lynn Novick, premiering Sunday, September 17 at 8:00 pm. More local stories are on pages 4-5.

PBS HAWAII

BOARD OF DIRECTORS

Chair

Jason Fujimoto

Vice Chair

Joanne Grimes

Secretary

Bettina Mehnert

Treasurer

Kent Tsukamoto

Board Members

Muriel Anderson
Susan Bendon
Jodi Endo Chai
James E. Duffy Jr.
Matthew Emerson
Jake Fergus
Jason Haruki
Noelani Kalipi
Ian Kitajima

Joy Miura Koerte
Kamani Kualā'au
Mary Ann Manahan
Aaron Salā
Julie Shimonishi
Ka'iulani Sodaro
Candy Suiso
Huy Vo
Bruce Voss

MANAGEMENT

President and CEO

Leslie Wilcox

Senior Vice President/CFO

Karen Yamamoto

VP Content

Linda Brock

VP Integrated Media Production

Jason Suapaia

VP Advancement

Mariiko Miho

VP Communications

Liberty Peralta

Director, Learning Initiatives

Robert Pennybacker

Chief Engineer

John Nakahira

PROGRAM GUIDE

Editor

Liberty Peralta

Graphic Artist

Randall Choo

Communications Assistant

Emily Bodfish

Contributing Writer

Emily Bodfish

Program Listings

Emily Bodfish
John Kovacich

What Drives KEN BURNS?



Filmmaker Ken Burns, who's coming out with an 18-hour Vietnam War film to be shown over 10 evenings this month on PBS Hawai'i, freely admits that he's a workaholic; that he's obsessive in his pursuit of archival material for his films; that his detractors dismiss him as long-winded.

And Burns can laugh at himself.

As he did when he was being honored as the greatest American documentary filmmaker of his generation. Stepping up to receive a lifetime achievement, he joked that he'd prepared a nine-part response.

He had to learn about laughter, since sadness and loss were prevailing childhood themes.

Burns, 64, is clear about what drives him and his compulsion to look at the past. It is the death of his mother, Lyla Burns, just before he turned 12. She had suffered from breast cancer for nearly a decade.

Burns remembers coming home from school or play every day and telling his ailing mother stories about what had happened, in effect sharing life with her. After she passed away, he recalls watching movies with father, Robert Burns, and seeing him cry, which was something his father didn't do in other circumstances. That's when young Burns says he grasped the storytelling power of film.

In a short video posted online at creativeplanetnetwork.com, Burns says: "I found myself becoming a documentary filmmaker, trying to tell stories and using American

history to tell those stories that I wanted to tell. When you look back at it, the job that I try to do is to wake the dead. And it doesn't seem too far a leap to understand, from that early decision to be a filmmaker, who I really want to wake up."

From the earliest time that he can remember as a child, he says he knew his beloved mom was sick. He was not close to his father.

As a young man, he rejected chasing a Hollywood-type career. He says he innately knew, and was taught at Hampshire College in Amherst, Massachusetts, that "there's much more drama in what is and what was, than in anything the human imagination can dream of."

Delivering the commencement address at Stanford University last year, Burns explained that delving into history can lead to personal and professional breakthroughs.

"The past often offers an illuminating and clear-headed perspective from which to observe and reconcile the passions of the present moment, just when they threaten to overwhelm us," he told new graduates.

Burns wants this newest film with his creative partner Lynn Novick, about the divisive Vietnam War era, to spur national healing.

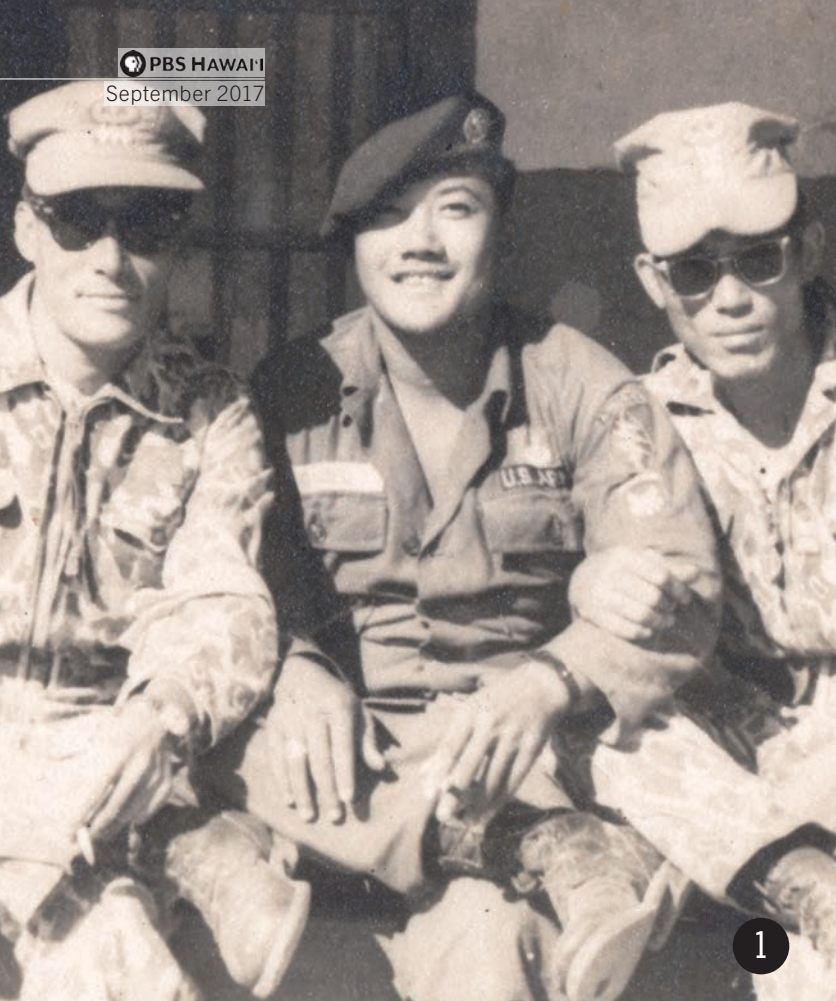
As he told an interviewer from Vanderbilt University in Nashville, Tennessee:

"We caught something during the Vietnam War – like a virus – and we are still suffering from the effects of that virus today. I'm hoping my film is a bit like a vaccination – that it exposes you to a little bit of the disease to permit you to go past it and heal from it."

I invite you to join me in viewing this new Burns/Novick film series, starting at 8:00 pm, Sunday, September 17, on your TV station, PBS Hawai'i.

A hui hou (until next time),

A handwritten signature in black ink that reads "Leslie Filcox".



Cover Story

The Vietnam War

By Emily Bodfish

Remember Gabriel died on Asian shores,
To a wife and child he will return no more,
They heard that brave man say,
I would give my life for the Green Beret.

These were the original closing lines of “The Ballad of the Green Berets,” a song written in honor of **James Gabriel Jr.**, the first Special Forces officer, and the first soldier from Hawai‘i, killed during the Vietnam conflict. (**Billie Gabriel**, James’ sister, will appear on a new episode of **Long Story Short with Leslie Wilcox** on Tuesday, September 19 at 7:30 pm.) The ballad would later be revised and popularized, hitting number one on the Billboard charts for five weeks in 1966. It was one of the few songs of the era that shed a

positive light on the military, as support for the war drastically declined over the years that followed.

“The Vietnam War was a decade of agony that took the lives of more than 58,000 Americans,” said Ken Burns, whose newest epic documentary, **The Vietnam War**, begins Sunday, September 17 at 8:00 pm. “Not since the Civil War have we as a country been so torn apart.”

The Vietnam War is a 10-part, 18-hour documentary that provides a 360-degree perspective on the war’s events. It delves deep into the experiences of Americans who fought in and fought against the war, as well as Vietnamese combatants and civilians from both the winning and losing sides.

In addition to the nearly 80 witnesses featured in the epic film by Burns and Lynn Novick, PBS Hawai‘i will bring you intimate interviews with local Vietnam veterans and the families of service members killed



THE VIETNAM WAR
A FILM BY KEN BURNS & LYNN NOVICK

Sunday, September 17 – Thursday, September 21, 8:00 pm
 Sunday, September 24 – Thursday, September 28, 8:00 pm



Photo Credits (from left):
 Rene Burri/Magnum Photos
 John Filo/Getty Images
 AP Photo/Sal Veder

in battle. Excerpts from these local interviews will be shown preceding each episode of the documentary and will be online to view at pbs.hawaii.org/vietnam. The local veterans related their memories of duty, uncertainty, loss and recovery representing Hawai'i, the newly minted 50th star on the U.S. flag.

Green Beret veteran **Roy Ogasawara** described moments of bonding with Vietnamese counterparts, eating together with chopsticks and seeing how similar their skin tones were. Yet, he was advised to be wary of Viet Cong spies. "In the fierce firefights, an American adviser would be killed, and when they examined the bullet hole, the bullet came from the back, not from the front," Ogasawara said. Even before landing in Vietnam, Ogasawara knew he was entering uncertain territory. "Even as a well-trained paratrooper, a Green Beret, a ranger...I didn't know what to expect," he said.

Ron Schaedel, a Marine veteran, touched on his struggle with post-traumatic stress syndrome, and his concern for his own sons in the military. "I've got PTSD to the max, I'm trying to deal with my own issues, and I'm worried about my two boys, but who's the rock? My wife," he said. "I owe my health and my life to my wife." To this day, he said, "I take it a day at a time, and life goes on."

This film doesn't attempt to answer what was left unresolved after the war. Rather, it's an effort to weave together opposing perspectives, pose questions and open up dialogue that may lead to healing, and eventually, closure.

PHOTOS (FROM LEFT):

1. James Gabriel Jr., U.S. Army Green Beret (center)
2. James Gabriel Jr., U.S. Army Green Beret
3. Roy Ogasawara, U.S. Army Green Beret
4. Ron Schaedel, U.S. Marine Corps (pictured wearing glasses)

PRIMETIME & WEEKEND LISTING SCHEDULE

PBS Hawai'i is on the air seven days a week from 5:00 am to midnight. Viewers with cable service also have access to overnight programming which is indicated by **Cable Only After Midnight**. Viewers with cable service and high-definition (HD) TVs may watch PBS Hawai'i in high-definition on Spectrum (formerly Oceanic Time Warner) Channel 1010.

Over-the-Air

Broadcast Channels
(KHET) Channel 11.1 - 11.2 - 11.3
(KMEB) Channel 10.1 - 10.2 - 10.3

Spectrum (formerly Oceanic Time Warner)

Basic Cable: Channel 10
Digital: Channel 90
HD: Channel 1010
PBS Hawai'i Kids: Channel 443

Hawaiian Telcom

Basic Cable: Channel 11
HD: Channel 1011
PBS Hawai'i Kids: Channel 96

CODING:

TBA - To Be Announced
(e) encore

When possible, encore broadcasts will be indicated in parentheses. All programs have closed-captioning. Schedule is subject to change.

Questions about programming changes?

Please call PBS Hawai'i toll free:
(800) 238-4847

For more program information and the latest schedules, visit pbshawaii.org

PBS Hawai'i magazine (ISSN: 1946-0813) is published monthly by the Hawai'i Public Television Foundation, dba PBS Hawai'i. Periodicals postage PAID at Honolulu, Hawai'i and at additional entry mailing offices in Hilo, Kahului, Kailua-Kona, Kaunakakai, and Lihue. POSTMASTER: Send address changes to PBS Hawai'i, Advancement Department, 315 Sand Island Access Road, Honolulu, HI 96819-2295.



AMERICAN MASTERS *Tyrus Wong* Friday, September 8, 9:00 pm
Discover the art, life and enduring impact of Tyrus Wong, the renowned Chinese American painter behind Walt Disney's *Bambi*. Pictured: Wong in his studio with director Pamela Tom.

1 FRIDAY

- 7:30 **WASHINGTON WEEK**
- 8:00 **CHARLIE ROSE - THE WEEK**
- 8:30 **THE DAVID RUBENSTEIN SHOW: PEER TO PEER CONVERSATIONS**
Jamie Dimon
- 9:00 **AMERICAN MASTERS**
Richard Linklater Take an unconventional look at the Oscar-nominated filmmaker of *Boyhood*, *Slacker* and *Dazed and Confused*.
- 10:30 **AMERICAN MASTERS**
Norman Lear (e)
- Cable Only After Midnight**
- 12:00 **CHARLIE ROSE**
- 1:00 **THE TUNNEL: SABOTAGE**
- 2:00 **THIS OLD HOUSE HOUR**

2 SATURDAY

- 12:00 **HIKI NŌ (e)**
- 12:30 **SIT AND BE FIT** *Good Alignment (e)*
- 1:00 **PAINTING WITH WILSON BICKFORD** *Monarch Butterfly*
- 1:30 **BEST OF THE JOY OF PAINTING**
Hazy Day
- 2:00 **AMERICAN WOODSHOP** *Shop Tool Tray Bench for the Organized Work Space*
- 2:30 **ASK THIS OLD HOUSE (e)**
- 3:00 **THIS OLD HOUSE** *Arlington Arts &*

- Crafts | Decorative Touches Make the Difference (e)*
- 3:30 **MOTORWEEK**
- 4:00 **MARTHA BAKES** *Gulf (e)*
- 4:30 **COOK'S COUNTRY** *Spicy and Sour for Supper*
- 5:00 **NICK STELLINO: STORYTELLER IN THE KITCHEN** *Family Matters*
- 5:30 **LIDIA'S KITCHEN** *Herbs and Spices*
- 6:00 **DINING WITH THE CHEF**
- 6:30 **PBS NEWSHOUR WEEKEND**
- 7:00 **MOVEABLE FEAST WITH FINE COOKING** *San Francisco: David Barzelay and Brandon Jew (e)*
- 7:30 **RICK STEVES' EUROPE** *Assisi and Italian Country Charm (e)*
- 8:00 **IT'S "JUST" ANXIETY** This documentary introduces a dozen people from diverse backgrounds who describe their personal struggles with this mental health condition. The film follows individuals with anxiety symptoms ranging from excessive worry and fear to more extreme manifestations such as compulsive behavior and torturous panic attacks.
- 9:00 **AMERICAN EPIC** *The Big Bang (e)*
- 10:00 **AMERICAN EPIC** *Blood and Soil (e)*
- 11:00 **AUSTIN CITY LIMITS** *Beck (e)*



Courtesy of Luna Productions

MY LOVE AFFAIR WITH THE BRAIN: THE LIFE & SCIENCE OF DR. MARIAN DIAMOND Saturday, September 9, 8:00 pm
 The late Dr. Marian Diamond and Indigo Prasad, age 4, who is seeing a human brain for the first time.

Cable Only After Midnight

12:00 **AMERICAN EXPERIENCE**

Walt Disney: Part One

2:00 **WASHINGTON WEEK**

2:30 **CHARLIE ROSE - THE WEEK**

3 SUNDAY

12:00 **ANTIQUES ROADSHOW** *Rapid City, Part 1 of 3 (e)*

1:00 **PACIFIC HEARTBEAT** *Visions in the Dark: The Life of Pinky Thompson (e)*

2:00 **INSIGHTS ON PBS HAWAI'I** (e)

3:00 **HIKI NŌ** (e)

3:30 **NA MELE** *Melveen Leed (e)*

4:00 **LONG STORY SHORT WITH LESLIE WILCOX** *Art Souza (e)*

4:30 **ART WOLFE'S TRAVELS TO THE EDGE** *Brazil: The Pantanal (e)*

5:00 **NHK NEWSLINE**

5:30 **ASIA INSIGHT**

6:00 **THE OPEN MIND**

6:30 **PBS NEWSHOUR WEEKEND**

7:00 **SECRETS OF THE SIX WIVES** *Divorced, Beheaded, Survived (e)*

8:00 **ENDEAVOUR SEASON 4 ON MASTERPIECE** *Lazaretto* See how whispers of a cursed hospital ward and a seemingly innocuous death begin a chain of events which lead to Endeavour's investigation of the

hospital, staff and patients.

9:30 **VICIOUS** *Flatmates (e)*

10:00 **THE TUNNEL: SABOTAGE** *Part 8 of 8*

11:00 **TO THE CONTRARY WITH BONNIE ERBE**

11:30 **CHARLIE ROSE - THE WEEK (e)**

Cable Only After Midnight

12:00 **AMERICAN MASTERS** *Richard Linklater*

1:30 **DIANA - HER STORY**

2:30 **RIBBON OF SAND**

4 MONDAY

7:30 **NA MELE** *Na Pali and Manuakepa (e)*

8:00 **ANTIQUES ROADSHOW** *Rapid City, Part 3 of 3 (e)*

9:00 **ANTIQUES ROADSHOW** *Seattle, WA, Part 1 of 3 (e)*

10:00 **POV** *The Grown-Ups* In a school for individuals with Down Syndrome, four middle-aged friends yearn for a life of greater autonomy in a society that marginalizes them as disabled. Get a humorous and at times tragic look at the limbo of conscious adults.

11:00 **IT'S "JUST" ANXIETY (e)**

Cable Only After Midnight

12:00 **CHARLIE ROSE**

1:00 **EMERY BLAGDON AND HIS HEALING MACHINE**

1:30 **ENDEAVOUR SEASON 4 ON MASTERPIECE** *Lazaretto*

5 TUESDAY

7:30 **LONG STORY SHORT WITH LESLIE WILCOX** *Michael Titterton (e)*

8:00 **AMERICAN EXPERIENCE** *Walt Disney: Part Two (e)*

10:00 **FRONTLINE** *The Man Who Knew (e)*

11:00 **NHK SPECIAL** *My Small Steps from Hiroshima*

Cable Only After Midnight

12:00 **CHARLIE ROSE**

1:00 **POV** *The Grown-Ups*

2:00 **ANTIQUES ROADSHOW** *Seattle, WA, Part 1 of 3*

6 WEDNESDAY

7:30 **LUCKY CHOW** *Northern Thai Cuisine (e)*

8:00 **EARTH'S NATURAL WONDERS** *Wonders of Water (e)*

9:00 **NOVA** *Killer Landslides (e)*

10:00 **INDIA - NATURE'S WONDERLAND** *Part 2 of 2 (e)*

11:00 **LONG STORY SHORT WITH LESLIE WILCOX** *Michael Titterton (e)*



CHRISTOPHER KIMBALL'S MILK STREET TELEVISION Saturdays, beginning September 9, 5:30 pm

Christopher Kimball's Milk Street Television wants to change how Americans cook by bringing home a fresher, bolder, simpler way of preparing food. Pictured, from left: Erika Bruce, Rayna Jhaveri, Christopher Kimball, Matthew Card, Catherin Smart, and Lynn Clark.

11:30 **LUCKY CHOW** *Northern Thai Cuisine (e)*

Cable Only After Midnight

12:00 **CHARLIE ROSE**

1:00 **AMERICAN EXPERIENCE** *Walt Disney: Part Two*

7 THURSDAY

7:30 **HIKI NŌ** *Focus on Compassion: Kūpuna (e)*

8:00 **INSIGHTS ON PBS HAWAII**

9:00 **PBS HAWAII PRESENTS** *Journey to Emalani (e)*

10:00 **GLOBE TREKKER** *Tough Trains: The Transcontinental Railroad, USA (e)*

11:00 **WELL READ** *Katie Kitamura: A Separation (e)*

11:30 **A CRAFTSMAN'S LEGACY** *The Bicycle Maker (e)*

Cable Only After Midnight

12:00 **CHARLIE ROSE**

1:00 **NOVA** *Killer Landslides*

2:00 **INDIA - NATURE'S WONDERLAND**

8 FRIDAY

7:30 **WASHINGTON WEEK**

8:00 **THIRD RAIL WITH OZY** The second season of the PBS public affairs series *Point Taken* relocates to New

York City with a new spin and a new name. Host Carlos Watson navigates impassioned yet civil point-counterpoint discussions focused on critical and provocative issues facing our changing American landscape.

8:30 **CHARLIE ROSE - THE WEEK**

9:00 **AMERICAN MASTERS** *Tyrus Wong* Discover the art, life and enduring impact of Tyrus Wong, the renowned Chinese American painter behind Walt Disney's *Bambi*, through new and never-before-seen interviews, movie clips and art.

10:30 **AMERICAN MASTERS** *Tanaquil le Clercq: Afternoon of a Faun (e)*

Cable Only After Midnight

12:00 **CHARLIE ROSE**

1:00 **THE TUNNEL: SABOTAGE** *Part 8 of 8*

2:00 **THIS OLD HOUSE HOUR**

9 SATURDAY

12:00 **HIKI NŌ** *Focus on Compassion: Kūpuna (e)*

12:30 **SIT AND BE FIT** *New Challenges (e)*

1:00 **PAINTING WITH WILSON BICKFORD** *December Barn, Part 1*

1:30 **BEST OF THE JOY OF PAINTING** *Frozen Beauty in Vignette*

2:00 **AMERICAN WOODSHOP** *Intarsia Flying Eagle Scroll Saw Folk Art with Scorched Wood Accents*

2:30 **ASK THIS OLD HOUSE (e)**

3:00 **THIS OLD HOUSE** *Arlington Arts & Crafts | Ship Lap for a Ship Shape House (e)*

3:30 **MOTORWEEK**

4:00 **MARTHA BAKES** *Pennsylvania Dutch (e)*

4:30 **COOK'S COUNTRY** *Smoky Barbecue Favorites*

5:00 **NICK STELLINO: STORYTELLER IN THE KITCHEN** *The Tomato Whisperer*

5:30 **CHRISTOPHER KIMBALL'S MILK STREET TELEVISION** *Homecooking, Chinese Style* Christopher Kimball wants to change how Americans cook by bringing home a fresher, bolder, simpler way of preparing food. Chris and his test cooks search the world over looking for the best recipes, and finding home cooks who can teach better ways to prepare a meal at home. This first season includes 40 all-new recipes.

6:00 **DINING WITH THE CHEF**



Courtesy of Courtesy Film Movement

POV My Love, Don't Cross That River Monday, September 11, 10:00 pm

Follow the story of 98-year-old Jo Byeong-man and 89-year-old Kang Gye-yeol, who have been married for 76 years.

- 6:30 **PBS NEWSHOUR WEEKEND**
 7:00 **MOVEABLE FEAST WITH FINE COOKING** *San Diego, California - Brian Malarkey and Javier Plascencia (e)*
 7:30 **RICK STEVES' EUROPE** *Siena and Tuscany's Wine Country (e)*
 8:00 **MY LOVE AFFAIR WITH THE BRAIN: THE LIFE & SCIENCE OF DR. MARIAN DIAMOND** This film follows the late Dr. Marian Diamond, one of the founders of modern neuroscience, over a five-year period and highlights her scientific accomplishments.
 9:00 **AMERICAN EPIC** *Out of the Many, The One (e)*
 10:30 **OREGON'S ANIMATION MAGIC** This special showcases the work of Oregon-based animators, taking viewers behind the scenes of the process and the finished pieces.
 11:00 **AUSTIN CITY LIMITS** *2014 Hall of Fame Special (e)*
Cable Only After Midnight
 12:00 **INDIA - NATURE'S WONDERLAND** *Part 2 of 2*
 1:00 **POV** *The Grown-Ups*
 2:00 **WASHINGTON WEEK**
 2:30 **CHARLIE ROSE - THE WEEK**

10 SUNDAY

- 12:00 **ANTIQUES ROADSHOW** *Rapid City, Part 3 of 3 (e)*
 1:00 **PBS HAWAII PRESENTS** *Journey to Emalani (e)*
 2:00 **INSIGHTS ON PBS HAWAII** (e)
 3:00 **HIKI NŌ** *Focus on Compassion: Kūpuna (e)*
 3:30 **NA MELE** *Na Pali and Manuakepa (e)*
 4:00 **LONG STORY SHORT WITH LESLIE WILCOX** *Michael Titterton (e)*
 4:30 **ART WOLFE'S TRAVELS TO THE EDGE** *West Africa: Togo and Benin (e)*
 5:00 **NHK NEWSLINE**
 5:30 **ASIA INSIGHT**
 6:00 **THE OPEN MIND**
 6:30 **PBS NEWSHOUR WEEKEND**
 7:00 **THE BLETCHLEY CIRCLE** *Part 1 of 3 (e)*
 8:00 **ENDEAVOUR SEASON 4 ON MASTERPIECE** *Harvest* Learn why the extraordinary discovery of a 2,000-year-old body reveals a new lead in a missing-person case. Endeavour and Thursday investigate the eerie village of Bramford, where nature is pitted against man and pagan rites hide nuclear mysteries.
 9:30 **VICIOUS** *Wedding (e)*
 10:00 **NHK SPECIAL** *My Small Steps from Hiroshima (e)*

11 MONDAY

- 11:00 **TO THE CONTRARY WITH BONNIE ERBE**
 11:30 **CHARLIE ROSE - THE WEEK (e)**
Cable Only After Midnight
 12:00 **IT'S "JUST" ANXIETY**
 1:00 **AMERICAN MASTERS** *Tyrus Wong*
 2:30 **FIRST DEGREE**
11 MONDAY
 7:30 **NA MELE** *Keola Beamer, Nona Beamer and Moana Beamer (e)*
 8:00 **ANTIQUES ROADSHOW** *Seattle, WA, Part 2 of 3 (e)*
 9:00 **ANTIQUES ROADSHOW** *Seattle, WA, Part 3 of 3 (e)*
 10:00 **POV My Love, Don't Cross That River** Spouses 89-year-old Kang Gye-yeol and 98-year-old Jo Byeong-man have shared a home for 76 years. While they spend every day together like a newlywed couple, they now must face the reality of their aging romance.
 11:00 **MY LOVE AFFAIR WITH THE BRAIN: THE LIFE & SCIENCE OF DR. MARIAN DIAMOND (e)**
Cable Only After Midnight
 12:00 **CHARLIE ROSE**
 1:00 **VICIOUS** *Wedding*
 1:30 **ENDEAVOUR SEASON 4 ON MASTERPIECE** *Harvest*



Courtesy of WGBH/Meredith Nieman

THIRD RAIL WITH OZY

Fridays, beginning September 8, 8:00 pm

The public affairs show *Point Taken* relocates to New York City and adopts a new name, with Carlos Watson returning as host.



Courtesy of Marty Sain/Metropolitan Opera

GREAT PERFORMANCES AT THE MET *Nabucco*

Saturday, September 23, 8:00 pm

Plácido Domingo stars as the title character.

LIVE FROM THE ARTISTS DEN *John Legend*

Saturday, September 30, 10:00 pm

The R&B singer performs at New York City's historic Riverside Church.



Courtesy of the Papeo

pbshawaii.org

SUNDAY

MONDAY

TUESDAY



- 3**
- 7:00 **SECRETS OF THE SIX WIVES**
Divorced, Beheaded, Survived
- 8:00 **ENDEAVOUR SEASON 4 ON MASTERPIECE** *Lazaretto*
- 9:30 **VICIOUS** *Flatmates*
- 10:00 **THE TUNNEL: SABOTAGE**
Part 8 of 8
- 11:00 **TO THE CONTRARY WITH BONNIE ERBE**
- 11:30 **CHARLIE ROSE - THE WEEK**

- 10**
- 7:00 **THE BLETCHLEY CIRCLE**
Part 1 of 3
- 8:00 **ENDEAVOUR SEASON 4 ON MASTERPIECE** *Harvest*
- 9:30 **VICIOUS** *Wedding*
- 10:00 **NHK SPECIAL** *My Small Steps from Hiroshima*
- 11:00 **TO THE CONTRARY WITH BONNIE ERBE**
- 11:30 **CHARLIE ROSE - THE WEEK**

- 17**
- 7:00 **THE BLETCHLEY CIRCLE**
Part 2 of 3
- 8:00 **THE VIETNAM WAR** *Déjà Vu*
- 9:30 **THE VIETNAM WAR** *Déjà Vu*
- 11:00 **TO THE CONTRARY WITH BONNIE ERBE**
- 11:30 **CHARLIE ROSE - THE WEEK**

- 24**
- 7:00 **THE BLETCHLEY CIRCLE**
Part 3 of 3
- 8:00 **THE VIETNAM WAR**
Things Fall Apart
- 9:30 **THE VIETNAM WAR**
Things Fall Apart
- 11:00 **TO THE CONTRARY WITH BONNIE ERBE**
- 11:30 **CHARLIE ROSE - THE WEEK**

- 4**
- 7:30 **NA MELE**
Na Pali and Manuakepa
- 8:00 **ANTIQUES ROADSHOW** *Rapid City, Part 3 of 3*
- 9:00 **ANTIQUES ROADSHOW**
Seattle, WA, Part 1 of 3
- 10:00 **POV** *The Grown-Ups*
- 11:00 **IT'S "JUST" ANXIETY**

- 11**
- 7:30 **NA MELE** *Keola Beamer, Nona Beamer and Moana Beamer*
- 8:00 **ANTIQUES ROADSHOW**
Seattle, WA, Part 2 of 3
- 9:00 **ANTIQUES ROADSHOW**
Seattle, WA, Part 3 of 3
- 10:00 **POV** *My Love, Don't Cross That River*
- 11:00 **MY LOVE AFFAIR WITH THE BRAIN: THE LIFE & SCIENCE OF DR. MARIAN DIAMOND**

- 18**
- 7:30 **NA MELE** *Waipuna*
- 8:00 **THE VIETNAM WAR**
Riding the Tiger
- 9:30 **THE VIETNAM WAR**
Riding the Tiger
- 11:00 **AUDUBON**

- 25**
- 7:30 **NA MELE** *Hu'ewa*
- 8:00 **THE VIETNAM WAR**
The Veneer of Civilization
- 10:00 **THE VIETNAM WAR**
The Veneer of Civilization

- 5**
- 7:30 **LONG STORY SHORT WITH LESLIE WILCOX** *Michael Titterton*
- 8:00 **AMERICAN EXPERIENCE** *Walt Disney: Part Two*
- 10:00 **FRONTLINE** *The Man Who Knew*
- 11:00 **NHK SPECIAL** *My Small Steps from Hiroshima*

- 12**
- 7:30 **LONG STORY SHORT WITH LESLIE WILCOX**
Kevin Matsunaga
- 8:00 **MARTIN LUTHER: THE IDEA THAT CHANGED THE WORLD**
- 10:00 **FRONTLINE** *Abacus: Small Enough to Jail*
- 11:30 **ANNE MORROW LINDBERGH: YOU'LL HAVE THE SKY**

- 19**
- 7:30 **LONG STORY SHORT WITH LESLIE WILCOX** *Billie Gabriel*
- 8:00 **THE VIETNAM WAR**
The River Styx
- 10:00 **THE VIETNAM WAR**
The River Styx

- 26**
- 7:30 **LONG STORY SHORT WITH LESLIE WILCOX** *Rita Palafox*
- 8:00 **THE VIETNAM WAR**
The History of the World
- 10:00 **THE VIETNAM WAR**
The History of the World

SEPTEMBER EVENING

6

7:30 **LUCKY CHOW** *Northern Thai Cuisine*
 8:00 **EARTH'S NATURAL WONDERS** *Wonders of Water*
 9:00 **NOVA** *Killer Landslides*
 10:00 **INDIA - NATURE'S WONDERLAND** *Part 2 of 2*
 11:00 **LONG STORY SHORT WITH LESLIE WILCOX** *Michael Titterton*

13

7:30 **LUCKY CHOW** *Filipino Entrepreneurs*
 8:00 **EARTH'S NATURAL WONDERS** *Living Wonders*
 9:00 **NOVA** *Death Dive to Saturn*
 10:00 **THE FARTHEST – VOYAGER IN SPACE**

20

7:30 **LUCKY CHOW** *The Bay Area's Pacific Rim Cuisine*
 8:00 **THE VIETNAM WAR** *Resolve*
 10:00 **THE VIETNAM WAR** *Resolve*

27

7:30 **LUCKY CHOW** *Chinatown, Reimagined*
 8:00 **THE VIETNAM WAR** *A Disrespectful Loyalty*
 10:00 **THE VIETNAM WAR** *A Disrespectful Loyalty*

7

7:30 **HIKI NŌ** *Focus on Compassion: Kūpuna*
 8:00 **INSIGHTS ON PBS HAWAI'I**
 9:00 **PBS HAWAI'I PRESENTS** *Journey to Emalani*
 10:00 **GLOBE TREKKER** *Tough Trains: The Transcontinental Railroad, USA*
 11:00 **WELL READ** *Katie Kitamura: A Separation*
 11:30 **A CRAFTSMAN'S LEGACY** *The Bicycle Maker*

14

7:30 **HIKI NŌ** *Focus on Compassion: Parents and Children*
 8:00 **INSIGHTS ON PBS HAWAI'I**
 9:00 **PBS HAWAI'I PRESENTS** *Living Your Dying*
 10:00 **GLOBE TREKKER** *Tough Boats: The Amazon*
 11:00 **WELL READ** *Garth Stein & Mary Ann Gwinn: Writers to Reviewers*
 11:30 **A CRAFTSMAN'S LEGACY** *The Furnituremaker*

21

7:30 **HIKI NŌ** *Focus on Compassion: Self-Identity*
 8:00 **THE VIETNAM WAR** *This Is What We Do*
 9:30 **THE VIETNAM WAR** *This Is What We Do*
 11:00 **LONG STORY SHORT WITH LESLIE WILCOX** *Billie Gabriel*
 11:30 **A CRAFTSMAN'S LEGACY** *The Ceramist*

28

7:30 **HIKI NŌ** *Focus on Compassion: Animals*
 8:00 **THE VIETNAM WAR** *The Weight of Memory*
 10:00 **THE VIETNAM WAR** *The Weight of Memory*

1

7:30 **WASHINGTON WEEK**
 8:00 **CHARLIE ROSE - THE WEEK**
 8:30 **THE DAVID RUBENSTEIN SHOW: PEER TO PEER CONVERSATIONS** *Jamie Dimon*
 9:00 **AMERICAN MASTERS** *Richard Linklater*
 10:30 **AMERICAN MASTERS** *Norman Lear*

8

7:30 **WASHINGTON WEEK**
 8:00 **THIRD RAIL WITH OZY**
 8:30 **CHARLIE ROSE - THE WEEK**
 9:00 **AMERICAN MASTERS** *Tyrus Wong*
 10:30 **AMERICAN MASTERS** *Tanaquil le Clercq: Afternoon of a Faun*

15

7:30 **WASHINGTON WEEK**
 8:00 **THIRD RAIL WITH OZY**
 8:30 **CHARLIE ROSE - THE WEEK**
 9:00 **BALLET HISPANICO**
 10:34 **BLACK BALLERINA**
 11:32 **ART BASEL: A PORTRAIT**

22

7:30 **WASHINGTON WEEK**
 8:00 **THIRD RAIL WITH OZY**
 8:30 **CHARLIE ROSE - THE WEEK**
 9:00 **CRAFT IN AMERICA** *Nature*
 10:00 **CRAFT IN AMERICA** *Service*
 11:00 **BLUEGRASS UNDERGROUND SPECIAL**

29

7:30 **WASHINGTON WEEK**
 8:00 **THIRD RAIL WITH OZY**
 8:30 **CHARLIE ROSE - THE WEEK**
 9:00 **CRAFT IN AMERICA** *Borders*
 10:00 **CRAFT IN AMERICA** *Neighbors*
 11:00 **JOHNNY CASH'S BITTER TEARS**

2

7:00 **MOVEABLE FEAST WITH FINE COOKING** *San Francisco: David Barzelay and Brandon Jew*
 7:30 **RICK STEVES' EUROPE** *Assisi and Italian Country Charm*
 8:00 **IT'S "JUST" ANXIETY**
 9:00 **AMERICAN EPIC** *The Big Bang*
 10:00 **AMERICAN EPIC** *Blood and Soil*
 11:00 **AUSTIN CITY LIMITS** *Beck*

9

7:00 **MOVEABLE FEAST WITH FINE COOKING** *San Diego, California - Brian Malarkey and Javier Plascencia*
 7:30 **RICK STEVES' EUROPE** *Siena and Tuscany's Wine Country*
 8:00 **MY LOVE AFFAIR WITH THE BRAIN: THE LIFE & SCIENCE OF DR. MARIAN DIAMOND**
 9:00 **AMERICAN EPIC** *Out of the Many, The One*
 10:30 **OREGON'S ANIMATION MAGIC**

16

7:00 **MOVEABLE FEAST WITH FINE COOKING** *Baltimore, Maryland: Duff Goldman and Bryan Voltaggio*
 7:30 **RICK STEVES' EUROPE** *West England*
 8:00 **AUDUBON**
 9:00 **THE AMERICAN EPIC SESSIONS**
 11:00 **AUSTIN CITY LIMITS 2015** *Hall of Fame Special*

23

7:00 **MOVEABLE FEAST WITH FINE COOKING** *Charleston, South Carolina: Sean Brock and Benjamin Dennis*
 7:30 **RICK STEVES' EUROPE** *Southeast England*
 8:00 **GREAT PERFORMANCES AT THE MET** *Nabucco*
 10:30 **ANNE MORROW LINDBERGH: YOU'LL HAVE THE SKY**
 11:00 **AUSTIN CITY LIMITS** *Florence + The Machine/Andra Day*

30

7:00 **MOVEABLE FEAST WITH FINE COOKING** *Washington D.C.: Mike Isabella and Jennifer Carroll*
 7:30 **RICK STEVES' EUROPE** *England's Cornwall*
 8:00 **TOLKIEN & LEWIS: MYTH, IMAGINATION & THE QUEST FOR MEANING**
 9:00 **THE REAL SHERLOCK HOLMES**
 10:00 **LIVE FROM THE ARTISTS DEN** *John Legend*



Courtesy of Paula Lobo

BALLET HISPANICO Friday, September 15, 9:00 pm
Enjoy iconic works from the country's premier Latino dance company.

12 TUESDAY

- 7:30 **LONG STORY SHORT WITH LESLIE WILCOX** *Kevin Matsunaga (e)*
- 8:00 **MARTIN LUTHER: THE IDEA THAT CHANGED THE WORLD** On the 500th anniversary of the Reformation, this documentary examines the life of Martin Luther and the profound impact his ideas had on the course of Western history. Narrated by *Downton Abbey's* Hugh Bonneville.
- 10:00 **FRONTLINE** *Abacus: Small Enough to Jail* Hear the little-known story of the only U.S. bank prosecuted after the financial crisis.
- 11:30 **ANNE MORROW LINDBERGH: YOU'LL HAVE THE SKY (e)**
Cable Only After Midnight
- 12:00 **CHARLIE ROSE**
- 1:00 **GLOBE TREKKER** *Tough Trains: The Transcontinental Railroad, USA*
- 2:00 **POV** *My Love, Don't Cross That River*

13 WEDNESDAY

- 7:30 **LUCKY CHOW** *Filipino Entrepreneurs (e)*
- 8:00 **EARTH'S NATURAL WONDERS** *Living Wonders (e)*
- 9:00 **NOVA** *Death Dive to Saturn* For over

a decade, the Cassini space probe has been sending dazzling images of Saturn's breathtaking rings and mysterious moons. Join NOVA on a suspenseful ride during Cassini's final hours as it dives into Saturn's atmosphere.

- 10:00 **THE FARTHEST – VOYAGER IN SPACE (e)**
Cable Only After Midnight
- 12:00 **CHARLIE ROSE**
- 1:00 **AUSTIN CITY LIMITS** *2014 Hall of Fame Special*
- 2:00 **ANTIQUES ROADSHOW** *Seattle, WA, Part 3 of 3*

14 THURSDAY

- 7:30 **HIKI NŌ** *Focus on Compassion: Parents and Children (e)*
- 8:00 **INSIGHTS ON PBS HAWAII**
- 9:00 **PBS HAWAII PRESENTS** *Living Your Dying (e)*
- 10:00 **GLOBE TREKKER** *Tough Boats: The Amazon (e)*
- 11:00 **WELL READ** *Garth Stein & Mary Ann Gwinn: Writers to Reviewers (e)*
- 11:30 **A CRAFTSMAN'S LEGACY** *The Furnituremaker (e)*
Cable Only After Midnight
- 12:00 **CHARLIE ROSE**

- 1:00 **EARTH'S NATURAL WONDERS** *Living Wonders*
- 2:00 **NOVA** *Death Dive to Saturn*

15 FRIDAY

- 7:30 **WASHINGTON WEEK**
- 8:00 **THIRD RAIL WITH OZY**
- 8:30 **CHARLIE ROSE - THE WEEK**
- 9:00 **BALLET HISPANICO** Enjoy two iconic works from the country's premier Latino dance company: *CARMEN.maquia*, a modern take on Bizet's passionate opera; and *Club Havana*, a virtuosic reimagining of a sizzling nightclub by Cuban-born choreographer Pedro Ruiz.
- 10:34 **BLACK BALLERINA (e)**
- 11:32 **ART BASEL: A PORTRAIT (e)**
Cable Only After Midnight
- 12:00 **CHARLIE ROSE**
- 1:00 **GLOBE TREKKER** *Tough Boats: The Amazon*
- 2:00 **BLACK BALLERINA**

16 SATURDAY

- 12:00 **HIKI NŌ** *Focus on Compassion: Parents and Children (e)*
- 12:30 **SIT AND BE FIT** *Coordination and Reaction Time (e)*

1:00 **PAINTING WITH WILSON BICKFORD** *December Barn, Part 2*

1:30 **BEST OF THE JOY OF PAINTING** *Double Take*

2:00 **AMERICAN WOODSHOP** *Shaker-Inspired Wall Rack*

2:30 **ASK THIS OLD HOUSE** (e)

3:00 **THIS OLD HOUSE** *Arlington Arts & Crafts | Details Make the House Beautiful* (e)

3:30 **MOTORWEEK**

4:00 **MARTHA BAKES** *South Atlantic* (e)

4:30 **COOK'S COUNTRY** *Smothered and Dowdied*

5:00 **NICK STELLINO: STORYTELLER IN THE KITCHEN** *Dish to Name*

5:30 **CHRISTOPHER KIMBALL'S MILK STREET TELEVISION** *The New Baking*

6:00 **DINING WITH THE CHEF**

6:30 **PBS NEWSHOUR WEEKEND**

7:00 **MOVEABLE FEAST WITH FINE COOKING** *Baltimore, Maryland: Duff Goldman and Bryan Voltaggio* (e)

7:30 **RICK STEVES' EUROPE** *West England* (e)

8:00 **AUDUBON** John James Audubon, a self-taught painter and ornithologist, left a legacy of art and science that made him famous in his lifetime and that endures to this day. Filmed in locations that Audubon explored, the film brings to life his timeless paintings with stunning footage of the living birds he immortalized.

9:00 **THE AMERICAN EPIC SESSIONS** (e)

11:00 **AUSTIN CITY LIMITS** *2015 Hall of Fame Special* (e)

Cable Only After Midnight

12:00 **THE FARTHEST - VOYAGER IN SPACE**

2:00 **WASHINGTON WEEK**

2:30 **CHARLIE ROSE - THE WEEK**

17 SUNDAY

12:00 **ANTIQUES ROADSHOW** *Seattle, WA, Part 2 of 3* (e)

1:00 **PBS HAWAI'I PRESENTS** *Living Your Dying* (e)

2:00 **INSIGHTS ON PBS HAWAI'I** (e)

3:00 **HIKI NŌ** *Focus on Compassion: Parents and Children* (e)

3:30 **NA MELE** *Keola Beamer, Nona Beamer and Moana Beamer* (e)

4:00 **LONG STORY SHORT WITH LESLIE WILCOX** *Kevin Matsunaga* (e)

4:30 **ART WOLFE'S TRAVELS TO THE EDGE** *New Zealand* (e)

5:00 **NHK NEWSLINE**

5:30 **ASIA INSIGHT**

6:00 **THE OPEN MIND**

6:30 **PBS NEWSHOUR WEEKEND**

7:00 **THE BLETCHLEY CIRCLE** *Part 2 of 3* (e)

8:00 **THE VIETNAM WAR** *Déjà Vu* After a long and brutal war, revolutionaries led by Ho Chi Minh end nearly a century of French colonial rule. With the Cold War intensifying, Vietnam is divided: communists hold the North, while America supports an untested regime in the South.

9:30 **THE VIETNAM WAR** *Déjà Vu* (e)

11:00 **TO THE CONTRARY WITH BONNIE ERBE**

11:30 **CHARLIE ROSE - THE WEEK** **Cable Only After Midnight**

12:00 **POV** *My Love, Don't Cross That River*

1:00 **THE FARTHEST – VOYAGER IN SPACE**

18 MONDAY

7:30 **NA MELE** *Waipuna* (e)

8:00 **THE VIETNAM WAR** *Riding the Tiger* President Kennedy and his advisors wrestle with how deeply to get involved in South Vietnam. As the increasingly autocratic Diem regime faces a growing communist insurgency and widespread Buddhist protests, a grave political crisis unfolds.

9:30 **THE VIETNAM WAR** *Riding the Tiger* (e)

11:00 **AUDUBON** (e)

Cable Only After Midnight

12:00 **CHARLIE ROSE**

1:00 **EARTH'S NATURAL WONDERS** *Living Wonders*

2:00 **ANTIQUES ROADSHOW** *Boise, ID, Part 1 of 3*

19 TUESDAY

7:30 **LONG STORY SHORT WITH LESLIE WILCOX** *Billie Gabriel* Billie Gabriel's life was forever changed when her brother James "Kimo" Gabriel Jr. was killed in the Vietnam War. While she was only 11 when he died, the tragedy left its mark. She has dedicated much of her adult life helping to preserve the legacies of the more than 270 Hawai'i servicemen who lost their lives in the Vietnam War.

8:00 **THE VIETNAM WAR** *The River Styx* With South Vietnam in chaos, Hanoi accelerates the insurgency, sending combat troops to the South. Fearing Saigon's collapse, President Lyndon B. Johnson escalates, authorizing sustained bombing of the North and deploying ground troops in the South.

10:00 **THE VIETNAM WAR** *The River Styx* (e)

Cable Only After Midnight

12:00 **CHARLIE ROSE**

1:00 **GLOBE TREKKER** *Tough Boats: The Amazon*

2:00 **EARTH'S NATURAL WONDERS** *Living Wonders*

20 WEDNESDAY

7:30 **LUCKY CHOW** *The Bay Area's Pacific Rim Cuisine* (e)

8:00 **THE VIETNAM WAR** *Resolve* Defying American airpower, North Vietnamese troops and materiel stream down the Ho Chi Minh Trail, while Saigon struggles to pacify the countryside. As an antiwar movement builds at home, GIs discover that this war is nothing like their fathers' war.

10:00 **THE VIETNAM WAR** *Resolve* (e)

Cable Only After Midnight

12:00 **CHARLIE ROSE**

1:00 **AUDUBON**

2:00 **NOVA** *Nuclear Meltdown Disaster*

21 THURSDAY

7:30 **HIKI NŌ** *Focus on Compassion: Self-Identity* (e)



Courtesy of Mark Markley

CRAFT IN AMERICA *Borders* Friday, September 29, 9:00 pm
Master altar maker Ofelia Esparza creates her community altar at Grand Park, Los Angeles.

8:00 **THE VIETNAM WAR** *This Is What We Do* Enemy body counts and American casualties mount as GIs chase an elusive foe and face deadly ambushes and artillery. While Hanoi lays plans for a massive surprise offensive, the Johnson Administration reassures the public that victory is in sight.

9:30 **THE VIETNAM WAR** *This Is What We Do (e)*

11:00 **LONG STORY SHORT WITH LESLIE WILCOX** *Billie Gabriel (e)*

11:30 **A CRAFTSMAN'S LEGACY** *The Ceramist*

Cable Only After Midnight

12:00 **CHARLIE ROSE**

1:00 **BALLET HISPANICO**

2:33 **RIBBON OF SAND**

22 FRIDAY

7:30 **WASHINGTON WEEK**

8:00 **THIRD RAIL WITH OZY**

8:30 **CHARLIE ROSE - THE WEEK**

9:00 **CRAFT IN AMERICA** *Nature (e)*

10:00 **CRAFT IN AMERICA** *Service (e)*

11:00 **BLUEGRASS UNDERGROUND SPECIAL (e)**

Cable Only After Midnight

12:00 **CHARLIE ROSE**

1:00 **BLUEGRASS UNDERGROUND SPECIAL**

2:00 **THIS OLD HOUSE HOUR**

23 SATURDAY

12:00 **HIKI NŌ** *Focus on Compassion: Self-Identity (e)*

12:30 **SIT AND BE FIT** *Lymphatic System (e)*

1:00 **PAINTING WITH WILSON BICKFORD**

1:30 **BEST OF THE JOY OF PAINTING** *Serenity*

2:00 **AMERICAN WOODSHOP** *Wood Burning Old Wood for Framed Art Displays*

2:30 **ASK THIS OLD HOUSE (e)**

3:00 **THIS OLD HOUSE** *Arlington Arts & Crafts | An Arts & Craft for the Ages (e)*

3:30 **MOTORWEEK**

4:00 **MARTHA BAKES** *West (e)*

4:30 **COOK'S COUNTRY** *BBQ Thighs and Fried Peach Pies*

5:00 **NICK STELLINO: STORYTELLER IN THE KITCHEN**

The Great Outdoorsman

5:30 **CHRISTOPHER KIMBALL'S MILK STREET TELEVISION**

From Thailand with Love

6:00 **DINING WITH THE CHEF**

6:30 **PBS NEWSHOUR WEEKEND**

7:00 **MOVEABLE FEAST WITH FINE COOKING** *Charleston, South Carolina: Sean Brock and Benjamin Dennis (e)*

7:30 **RICK STEVES' EUROPE** *Southeast England (e)*

8:00 **GREAT PERFORMANCES AT THE MET** *Nabucco* Metropolitan Opera Music Director James Levine conducts Verdi's early drama of Ancient Babylon with Placido Domingo adding a new role to his repertory as the title character. Liudmyla Monastyrskya sings the tour-de-force role of Abigaille, Nabucco's willful daughter, with Jamie Barton as Fenena, Russell Thomas as Ismaele, and Dmitry Belosselskiy as the prophet Zaccaria.

10:30 **ANNE MORROW LINDBERGH: YOU'LL HAVE THE SKY (e)**

11:00 **AUSTIN CITY LIMITS** *Florence + The Machine/Andra Day (e)*

Cable Only After Midnight

12:00 **ART BASEL: A PORTRAIT**

12:30 **CRAFT IN AMERICA** *Nature*

1:30 **THIRD RAIL WITH OZY**

2:00 **WASHINGTON WEEK**

2:30 **CHARLIE ROSE - THE WEEK**

24 SUNDAY

- 12:00 **ANTIQUES ROADSHOW** *Boise, ID, Part 1 of 3 (e)*
- 1:00 **PACIFIC HEARTBEAT**
Sons of Halawa (e)
- 2:00 **PACIFIC HEARTBEAT** *Waiting for John (e)*
- 3:00 **HIKI NŌ** *Focus on Compassion: Self-Identity (e)*
- 3:30 **NA MELE** *Waipuna (e)*
- 4:00 **LONG STORY SHORT WITH LESLIE WILCOX** *Billie Gabriel (e)*
- 4:30 **ART WOLFE'S TRAVELS TO THE EDGE** *Wild Asia: Nepal and India (e)*
- 5:00 **NHK NEWSLINE**
- 5:30 **ASIA INSIGHT**
- 6:00 **THE OPEN MIND**
- 6:30 **PBS NEWSHOUR WEEKEND**
- 7:00 **THE BLETCHLEY CIRCLE**
Part 3 of 3 (e)
- 8:00 **THE VIETNAM WAR** *Things Fall Apart* Seeing the violence and brutality of the Tet Offensive unfold on television, Americans begin to doubt President Lyndon B. Johnson's promise of "light at the end of the tunnel." LBJ decides not to run again. The country is staggered by assassinations and unrest.
- 9:30 **THE VIETNAM WAR** *Things Fall Apart (e)*
- 11:00 **TO THE CONTRARY WITH BONNIE ERBE**
- 11:30 **CHARLIE ROSE - THE WEEK (e)**
- Cable Only After Midnight**
- 12:00 **THIS OLD HOUSE HOUR**
- 1:00 **ANTIQUES ROADSHOW** *Boise, ID, Part 1 of 3*
- 2:00 **HISTORY DETECTIVES**

25 MONDAY

- 7:30 **NA MELE** *Hu'ewa (e)*
- 8:00 **THE VIETNAM WAR** *The Veneer of Civilization* With the country at odds over the war, draft-age Americans face wrenching choices. After chaos roils the Democratic Convention, Richard Nixon narrowly wins the presidency. In Vietnam, soldiers on all sides witness terrible savagery and unflinching courage.

- 10:00 **THE VIETNAM WAR** *The Veneer of Civilization (e)*

Cable Only After Midnight

- 12:00 **CHARLIE ROSE**
- 1:00 **CRAFT IN AMERICA** *Service*
- 2:00 **ANTIQUES ROADSHOW** *Boise, ID, Part 2 of 3*

26 TUESDAY

- 7:30 **LONG STORY SHORT WITH LESLIE WILCOX** *Rita Palafox* Rita Palafox left her sheltered plantation upbringing on Maui to join the Army straight after high school and serve her country in the Vietnam War. Her 20-year career took her to places beyond Hawai'i – to Guam to recruit, and to the Deep American South, in the heart of Klan country.
- 8:00 **THE VIETNAM WAR** *The History of the World* When troop withdrawals begin, soldiers left in Vietnam ask what they are fighting for. News breaks of a shocking massacre at My Lai, and questions grow about the war's rectitude. The Cambodia invasion sparks large protests, with tragic consequences.
- 10:00 **THE VIETNAM WAR** *The History of the World (e)*
- Cable Only After Midnight**
- 12:00 **CHARLIE ROSE**
- 1:00 **THE BLETCHLEY CIRCLE**
Part 1 of 3
- 2:00 **AUSTIN CITY LIMITS** *Florence + The Machine/Andra Day*

27 WEDNESDAY

- 7:30 **LUCKY CHOW** *Chinatown, Reimagined (e)*
- 8:00 **THE VIETNAM WAR** *A Disrespectful Loyalty* South Vietnamese forces fighting on their own suffer a terrible defeat in Laos. After being re-elected in a landslide, President Nixon strikes a peace deal with Hanoi that allows American prisoners of war finally to come home to a bitterly divided country.
- 10:00 **THE VIETNAM WAR** *A Disrespectful Loyalty (e)*

Cable Only After Midnight

- 12:00 **CHARLIE ROSE**
- 1:00 **THE BLETCHLEY CIRCLE**
Part 2 of 3
- 2:00 **NOVA** *Why Planes Vanish*

28 THURSDAY

- 7:30 **HIKI NŌ** *Focus on Compassion: Animals (e)*
- 8:00 **THE VIETNAM WAR** *The Weight of Memory* Nixon resigns amidst Watergate, while a brutal civil war continues in Vietnam. North Vietnamese troops overtake Saigon with overwhelming force. For the next 40 years, Americans and Vietnamese from all sides search for healing and reconciliation.
- 10:00 **THE VIETNAM WAR** *The Weight of Memory (e)*
- Cable Only After Midnight**
- 12:00 **CHARLIE ROSE**
- 1:00 **THE BLETCHLEY CIRCLE**
Part 3 of 3
- 2:00 **ANTIQUES ROADSHOW** *Boise, ID, Part 2 of 3*

29 FRIDAY

- 7:30 **WASHINGTON WEEK**
- 8:00 **THIRD RAIL WITH OZY**
- 8:30 **CHARLIE ROSE - THE WEEK**
- 9:00 **CRAFT IN AMERICA** *Borders* Explore the relationships and influences Mexican and American craft artists have on each other and on our cultures. The program features traditional weaving and the creation of paper jewelry.
- 10:00 **CRAFT IN AMERICA** *Neighbors* Travel to and from the U.S. and Mexico to explore the people, history, traditions and crafts, noting how aesthetics cross from one country to another and back again in an organic and ongoing cultural exchange.
- 11:00 **JOHNNY CASH'S BITTER TEARS (e)**



THE REAL SHERLOCK HOLMES Saturday, September 30, 9:00 pm

Actors Martin Freeman (Dr. John Watson) and Benedict Cumberbatch (Sherlock Holmes) on the set of *Sherlock on Masterpiece*.

Cable Only After Midnight

- 12:00 **CHARLIE ROSE**
- 1:00 **ANTIQUES ROADSHOW** *Boise, ID, Part 2 of 3*
- 2:00 **THIS OLD HOUSE HOUR**

30 SATURDAY

- 12:00 **HIKI NŌ** *Focus on Compassion: Animals (e)*
- 12:30 **SIT AND BE FIT** *Mobility and Balance (e)*
- 1:00 **PAINTING WITH WILSON BICKFORD**
- 1:30 **BEST OF THE JOY OF PAINTING** *Florida's Glory*
- 2:00 **AMERICAN WOODSHOP** *Making Electric Guitars with Hard Maple Bodies*
- 2:30 **ASK THIS OLD HOUSE** *Hawai'i Makes 50 (e)*
- 3:00 **THIS OLD HOUSE** *Detroit | Rebirth in Detroit (e)*
- 3:30 **MOTORWEEK**
- 4:00 **MARTHA BAKES** *Southwest (e)*
- 4:30 **COOK'S COUNTRY** *Ribs and Mashed Potatoes Revisited*
- 5:00 **NICK STELLINO: STORYTELLER IN THE KITCHEN** *The Heart of the Artichoke*

- 5:30 **CHRISTOPHER KIMBALL'S MILK STREET TELEVISION** *Tahini Rules!*
- 6:00 **DINING WITH THE CHEF**
- 6:30 **PBS NEWSHOUR WEEKEND**
- 7:00 **MOVEABLE FEAST WITH FINE COOKING** *Washington D.C.: Mike Isabella and Jennifer Carroll (e)*
- 7:30 **RICK STEVES' EUROPE** *England's Cornwall (e)*
- 8:00 **TOLKIEN & LEWIS: MYTH, IMAGINATION & THE QUEST FOR MEANING** This documentary explores the imaginative process of authors J.R.R. Tolkien and C.S. Lewis and the characteristics of myth.
- 9:00 **THE REAL SHERLOCK HOLMES** Sherlock Holmes has been described as "the greatest detective who never lived." How has this ever-popular detective influenced modern-day crime-solving, espionage and even space travel? The film reveals the hidden side of Holmes' legacy through interviews, reconstructions and memorable clips from popular Sherlock productions.

- 10:00 **LIVE FROM THE ARTISTS DEN** *John Legend* John Legend celebrates the release of his album, *Darkness and Light*, with a performance at Manhattan's historic Riverside Church. He presents a set of new songs alongside such hits as "All Of Me" and "Glory."
- 11:00 **AUSTIN CITY LIMITS** *Paul Simon (e)*
- Cable Only After Midnight**
- 12:00 **CRAFT IN AMERICA** *Borders*
- 1:00 **THE DAVID RUBENSTEIN SHOW: PEER TO PEER CONVERSATIONS** *Lloyd Blankfein*
- 1:30 **THIRD RAIL WITH OZY**
- 2:00 **WASHINGTON WEEK**
- 2:30 **CHARLIE ROSE - THE WEEK**



5:00 am	Thomas & Friends
5:30 am	The Cat in the Hat
6:00 am	Ready Jet Go!
6:30 am	Wild Kratts
7:00 am	Nature Cat
7:30 am	Curious George
8:00 am	Curious George
8:30 am	Daniel Tiger's Neighborhood
9:00 am	Daniel Tiger's Neighborhood
9:30 am	Splash and Bubbles
10:00 am	Splash and Bubbles
10:30 am	Sesame Street
11:00 am	Sesame Street
11:30 am	Super Why!
noon	Peg + Cat
12:30 pm	Dinosaur Train
1:00 pm	Ready Jet Go!
1:30 pm	Nature Cat
2:00 pm	Nature Cat
2:30 pm	Wild Kratts
3:00 pm	Wild Kratts
3:30 pm	Odd Squad
4:00 pm	Odd Squad
4:30 pm	Arthur
5:00 pm	Arthur
5:30 pm	Martha Speaks
6:00 pm	Nature Cat
6:30 pm	Curious George
7:00 pm	Curious George
7:30 pm	Daniel Tiger's Neighborhood
8:00 pm	Daniel Tiger's Neighborhood
8:30 pm	Splash and Bubbles
9:00 pm	Splash and Bubbles
9:30 pm	Sesame Street
10:00 pm	Sesame Street
10:30 pm	Super Why!
11:00 pm	Peg + Cat
11:30 pm	Dinosaur Train
midnight	Ready Jet Go!
12:30 am	Nature Cat
1:00 am	Nature Cat
1:30 am	Wild Kratts
2:00 am	Wild Kratts
2:30 am	Odd Squad
3:00 am	Odd Squad
3:30 am	Arthur
4:00 am	Arthur
4:30 am	Martha Speaks

	MONDAY-FRIDAY	SATURDAY	SUNDAY
5:00 am	Clifford the Big Red Dog	Cyberchase	Caillou
5:30 am	Caillou	Bob the Builder	Bob the Builder
6:00 am	Sesame Street	Clifford the Big Red Dog	Splash and Bubbles
6:30 am	Ready Jet Go!	Sid the Science Kid	Mister Rogers' Neighborhood
7:00 am	Curious George	Curious George	Sesame Street
7:30 am	Curious George	The Cat in the Hat	Nature Cat
8:00 am	Peg + Cat	Peg + Cat	Ready Jet Go!
8:30 am	Dinosaur Train	WordWorld	WordWorld
9:00 am	Daniel Tiger's Neighborhood	Daniel Tiger's Neighborhood	Daniel Tiger's Neighborhood
9:30 am	Daniel Tiger's Neighborhood	Dinosaur Train	Super Why!
10:00 am	Super Why!	Wild Kratts	Curious George
10:30 am	Thomas & Friends	Thomas & Friends	WordGirl
11:00 am	Nature Cat	Martha Speaks	Arthur
11:30 am	The Cat in the Hat	Odd Squad	Wild Kratts
noon	Sesame Street	HIKI NŌ	Antiques Roadshow
12:30 pm	Splash and Bubbles	Sit and Be Fit	
1:00 pm	NHK Newsline	Painting with Wilson Bickford	PBS Hawai'i Presents
1:30 pm	NHK World	The Best of The Joy of Painting	
2:00 pm	NHK Newsline	American Woodshop	Insights on PBS Hawai'i
2:30 pm	NHK World	Ask This Old House	
3:00 pm	Wild Kratts	This Old House	HIKI NŌ
3:30 pm	Wordgirl	MotorWeek	Na Mele
4:00 pm	Arthur	Martha Bakes	Long Story Short
4:30 pm	Odd Squad	Cook's Country	Art Wolfe's Travels to the Edge
5:00 pm	NHK World	Nick Stellino	NHK Newsline
5:30 pm	NBR	Christopher Kimball's Milk Street	Asia Insight
6:00 pm	BBC World News	Dining with the Chef	The Open Mind
6:30 pm	PBS NewsHour	PBS NewsHour Weekend	PBS NewsHour Weekend

NHK WORLD

	MONDAY	TUESDAY	WEDNESDAY	THURSDAY	FRIDAY
1:00 pm	NHK Newsline	NHK Newsline	NHK Newsline	NHK Newsline	NHK Newsline
1:30 pm	Journeys in Japan	Tokyo Eye 2020	Core Kyoto	NHK World Programming	NHK World Showcase (1:10 pm)
2:00 pm	NHK Newsline	NHK Newsline	NHK Newsline	NHK Newsline	NHK Newsline
2:30 pm	imagine-nation	Samurai Wheels	Design Talks Plus	Kawaii International	NHK World Programming (2:10 pm)
5:00 pm	Great Gear	Science View	At Home with Venetia/ Seasoning the Seasons	Lunch On!/ Trails to Tsukiji	Rising

Local broadcasts of NHK World programming are made possible in part by the generous support of: ATSUHIKO AND INA GOODWIN TATEUCHI FOUNDATION and CRONIN FRIED SEKIYA KEKINA & FAIRBANKS

Partner Profile

Adventist Health Castle



Kathryn Raethel

President and CEO, Adventist Health Castle

Adventist Health Castle in Windward O’ahu, formerly Castle Medical Center, is a 160-bed medical center with over 1,000 employees and is staffed by more than 300 physicians. The facility offers a wide range of inpatient, outpatient and home-based services.

Adventist Health Castle’s unique combination of state-of-the art technology with “state-of-the-heart” care offers patients access to medical experts and innovative treatment, with a focus on providing patient-centered health care in an environment that extends well beyond hospital and clinic walls. The medical center also offers free, public seminars on nutrition, advances in medicine and spiritual wellness.

Adventist Health Castle supports PBS Hawai’i for the quality content provided to the community. The medical center is a local broadcast sponsor of Nightly Business Report because of the program’s in-depth coverage and access to some of the world’s top business leaders and policy makers.

Mahalo a nui loa to Adventist Health Castle for its support of PBS Hawai’i. If you or someone you know would like to be a program sponsor, please contact PBS Hawai’i’s Director of Business Support, Patty Doo, at pdoo@pbshawaii.org or call 808.462.5048.

LOCAL BROADCAST SPONSORS

- ABC Stores
- Atsuhiko and Ina Goodwin Tateuchi Foundation
- Bank of Hawaii Foundation
- Cades Foundation
- Cades Schutte LLP
- Castle Medical Center / Adventist Health Castle
- Caswell Orthodontics
- Cronin Fried Sekiya Kekina & Fairbanks
- Dr. Belinda Aquino
- Dr. John Mirikitani, J.D., PhD
- First Hawaiian Bank
- First Insurance Company of Hawaii
- G70
- Hanalani Schools
- Hawaii Dental Service
- Hawaii Government Employees Association
- Hawaii Medical Service Association
- Hawaiian Airlines
- Ice Palace Hawaii
- Jeffrey Samuels Real Estate Services
- John & Clifford Mirikitani Foundation
- John R. Halligan Charitable Fund
- Keiki Care Center of Hawaii
- Kina ‘Ole Estate
- Kosasa Foundation
- Le Jardin Academy
- Matson Foundation
- Mountain-Pacific Quality Health
- ‘Ohana Health Plan
- Pearl Hawaii Federal Credit Union
- Pigtails & Crewcuts
- Robert & Deanna Levy
- Ruby Tuesday Hawaii
- Seven-Eleven Hawai’i, Inc.
- Stepping Stones Academy
- Ulupono Initiative
- University of Hawai’i Professional Assembly
- Waikiki Health
- Waimea Valley

SUPPORT THE PROGRAMS YOU LOVE ON PBS HAWAI'I

INSULATED ECO-TOTE

With a contribution of \$75 or more to PBS Hawai'i, you can ditch your plastic bags and receive a pair of reusable insulated eco-totes. This black and green duo is ideal for every part of your life, from going to the markets to family reunions. The bags stand upright for easy packing and flatten down for storage. The totes measure approximately 15" high x 13" long x 10" wide.

Name: _____

Address: _____

City: _____ State: _____ Zip: _____

Phone: _____

Email: _____

VISA MasterCard American Express

Card No.: _____ Exp.: _____

Signature: _____

- No gift needed. I would like my entire donation to go toward quality programming for the community.
- Please check here if you do not want to receive the PBS Hawai'i Program Guide.
- Please check here if you would like to receive the PBS Hawai'i Program Guide via email. Please include your email address.

Contribute online at pbs-hawaii.org or mail your gift to:
P.O. Box 29606, Honolulu, HI 96820

Please indicate your level of support:

- \$1000 \$500
- \$365 \$250
- \$120 \$75
- \$35 Other amount: \$ _____

*For a gift of \$35 or more, you can choose to receive our monthly PBS Hawai'i Program Guide by mail or as a PDF to your email address.



To demonstrate my/our support for PBS Hawai'i, it is my/our desire to be acknowledged as a supporter on the donor wall.



Last Name _____ First Name _____

Corporation Name (if applicable) _____

Address _____ City _____ State _____ Zip _____

Home Phone _____ Business Phone _____ Email Address _____

My/Our gift:

- Minimum \$1,000 Front Entrance donor wall
- I/We would like to give more: \$ _____

Please list my gift as follows (print name):

- Contributed by _____
- In honor/memory of _____
- Please DO NOT publish my name as a donor ____ (initial)

My/Our payment:

Will be made via check (payable to PBS Hawai'i)
Should be charged to my: Visa MasterCard American Express
Card Number _____ Exp. Date _____
Name on Card (please print) _____
Cardholder Signature _____

Contribute online at pbs-hawaii.org or mail your gift to:
PBS Hawai'i, P.O. Box 29606, Honolulu, HI 96820



315 Sand Island Access Road
Honolulu, HI 96819-2295

PERIODICALS DATED MATERIAL

ABOUT US

PBS Hawai'i advances learning and discovery through storytelling that profoundly touches people's lives. We bring the world to Hawai'i and Hawai'i to the world.

Major support of the station comes from the people and businesses of Hawai'i.

PBS HAWAI'I

315 Sand Island Access Road
Honolulu, HI 96819-2295

808.462.5000
Toll Free: 800.238.4847

WEBSITE pbshawaii.org

WEEKLY NEWSLETTER

Send request to:
newsletter@pbshawaii.org

COMMENTS/SUGGESTIONS

email@pbshawaii.org



PBS Hawai'i, a member of the Public Broadcasting Service (PBS), is a community-supported, non-commercial public television station broadcasting throughout the state of Hawai'i.

NEXT MONTH



Courtesy of @Rena Veneri Stewart

Family Ingredients

Season 2 premieres Wednesday, October 11, 7:30 pm

Host Ed Kenney returns with six new episodes that celebrate Hawai'i's diversity through food and untold stories, featuring cuisine from the Philippines, Vietnam, Lana'i and the continental U.S. Singer-songwriter Jack Johnson is among the featured guests.