

THE PROGRAMMING GUIDE OF HAWAII'S PUBLIC TELEVISION STATION JANUARY 2013 | VOLUME 31, NUMBER 1



PBS Hawaii



Downton Abbey SEASON 3 PREMIERE

BEHIND THE SCENES...

of PBS Hawaii productions, programs and events



December Pledge

PBS Hawaii Board Members joined staff and students to celebrate the holiday season and help take pledges of support for Hawaii's public television station. *Mahalo* for your support!

PBS Hawaii

PBS Hawaii Management

President and CEO

Leslie Wilcox

Senior Vice President/CFO

Karen Yamamoto

VP Creative Services

Robert Pennybacker

VP Programming and Communications

Roberta Wong Murray

VP Advancement

Ben Nishimoto

PBS Hawaii Board of Directors

Chair

Robert Alm

Vice Chair

Jason Fujimoto

Secretary

Tim Johns

Treasurer

Thomas Koide

Carolyn Berry Wilson

Jimmy Borges

Keiki-Pua Dancil, Ph.D.

Guy Fujimura

Gayle Harimoto

Ken Hiraki

Alan Hoffman

Joan Lee Husted

Kawika Kahiapo

Darren Kimura

Ian Kitajima

Jean Kiyabu

Patrick Kobayashi

Jackson Nakasone

Cameron Nekota

Shaunagh Robbins

Marissa Sandblom

David Watumull

Editor

Roberta Wong Murray

Design/Photo Editor

Bryan Bosworth

Contributing Writers

Lynn Haff

John Kovacich

Tara Liu

Jill Matsumoto

Ben Nishimoto

Kaylee Noborikawa

Robert Pennybacker

Liberty Peralta

Communications Assistant

Abby Tateishi

Administrative Assistant

Meriel Collins

On the Cover

Return to Downton Abbey as wrenching social changes, romantic intrigues and personal crises grip the estate. See pages 4-5.

Editor's note:

The PBS Hawaii Program Guide has a new look, enhanced programming information and new features. Enjoy!

Respecting Viewers

One of our goals at PBS Hawaii is to be respectful of viewers – to communicate without “dumbing down” content; to make sure any conclusions we draw are reasonable and supported



Leslie Wilcox

by fact; and to be careful with the use of statistics, because they can lie.

I saw respect for viewers in action last month, as PBS Hawaii’s Board of Directors staffed our

phone bank during a **Great Performances** pledge show featuring singer Rod Stewart.

On live television, pledge show host and Board Member Ian Kitajima interviewed his fellow Board members. Their unrehearsed answers were crisp and clear. Faced with a big question about the future plans of PBS Hawaii, Board Chair Robbie Alm condensed his thoughtful answer into less than two minutes.

It struck me that these answers were respectful to viewers. Good information was shared without wasting time. (After all, Rod Stewart was waiting in the wings, so to speak, his gravelly voice ready for another number.)

The second thing that hit me was how focused the Board members are. With education, media and the nonprofit industry all in transition or transformation, PBS Hawaii is laser-focused on doing what our state needs the most, in the way we’re best able to serve.

Our Board members want PBS Hawaii to go beyond our customary and continuing important role of telling stories that profoundly touch lives.

Board members have set their sights on seeing the state’s only public television station make a real and demonstrable difference in hands-on 21st-century skills in Hawaii.

That’s why we now offer free professional development to teachers across the state in media literacy, journalism and video production. The teachers guide their students, who form the country’s first and only statewide student news network, **HIKI NŌ** (“can do”).

Last year, under the direction of Executive Producer Robert Pennybacker, the education/journalism program won a national award for public media innovation. Hawaii’s HIKI NŌ students hone skills in critical thinking, research, teamwork, oral and written communications, technology – and making deadlines with quality work.

There’s respect built into HIKI NŌ – for the diversity of our state; for teachers who are lifelong learners; for youth perspectives which are sometimes overlooked; for the ability of middle and high school students to be creative and responsible in their presentations; and for viewer interest in what’s capturing young people’s interest and imagination.

Our respect for viewers comes easily, as our Board and Staff are part of the community too. We’re proud that Hawaii is our home. And with our viewer-supporters, we’re delighted to bring the world to Hawaii and Hawaii to the world.

A hui hou (until next time),



Leslie Wilcox *President and CEO*



Through a variety of free workshops and classes on location, **HIKI NŌ** Executive Producer Robert Pennybacker devotes much of his time encouraging students and teachers to achieve excellence in media literacy, journalism and video production.

IT'S THE ROARING TWENTIES

The Great War is over and the long-awaited engagement of Lady Mary and Matthew is on, but all is not peaceful at Downton Abbey. Wrenching social changes, romantic intrigues and personal crises grip the majestic English country estate. Will Bates be released from prison? What new mischief will Thomas, the villainous footman, and O'Brien, his scheming ally, get into? Will wedding bells finally ring for Matthew and Lady Mary?

The much-acclaimed PBS series

Masterpiece Classic Downton Abbey, created by Academy Award-winning writer Julian Fellowes, returns for a thrilling third season, premiering January 6 at 8:00 pm.

Downton Abbey, the story of the noble Crawley family and their servants, is one of the most popular drama series in TV history, embraced by viewers and critics alike. The series won an impressive six Primetime Emmy Awards and a Golden Globe in its first season. Season 2 was the most-watched Masterpiece drama on record, with 17.1 million tuning in across the seven episodes.

It's also the most talked-about television drama. "What sets Downton Abbey apart," wrote Reuters, "is the buzz the show is creating on new social media websites like Twitter and Facebook." And with today's multitude of viewing options, a younger audience is being seduced by Downton Abbey's sumptuously spread-out plot, notes Masterpiece Executive Producer Rebecca Eaton.

"In the excellence of its writing, acting and production, Downton Abbey arrives at a perfect time," says Eaton. "Long-form episodic drama is the ideal fit for the way people watch television

today. With time-shifting, DVDs and streaming, viewers have rediscovered the joys of luxuriating in a sweeping story."

The returning cast includes Hugh Bonneville, Dame Maggie Smith (who received an Emmy Award for her role in the series), Elizabeth McGovern, Dan Stevens, Michelle Dockery, Jim Carter, Penelope Wilton, Joanne

Froggatt, Brendan Coyle and a host of others.

Season 3 includes a much-anticipated new cast member, Os-

car winner Shirley MacLaine, who plays Martha Levinson, the very American mother of Cora, Countess of Grantham (McGovern).

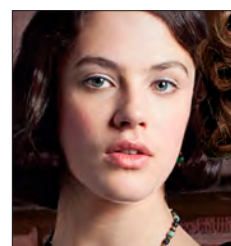
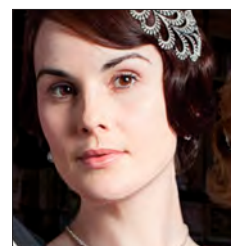
Downton Abbey is shot on location at Highclere Castle, a Victorian estate that is home to the Earl and Countess of Carnarvon.

"We wanted a house that architecturally dated from the mid- to late-19th century, in order to distinguish it from the many earlier houses used in previous period dramas," says Production Designer Donal Woods. "We spent a long time looking, and the search was a major part of our design process – not to mention a major part of the casting."

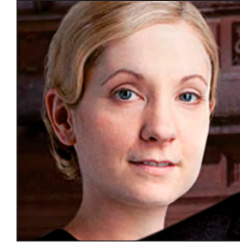
In the end, the estate was chosen for its distinctive character. "The great thing about Highclere's rooms is that they are all different in style, even though overall the house is Gothic Revival," observes Woods. To find out more, watch **Secrets of Highclere Castle** Sunday, January 6 at 7:00 pm.

Designer Susanna Buxton prepares no fewer than three evening dresses for each of the ladies, as well as nightgowns, teagowns and other basic wardrobe necessities.

The show's popularity has spawned Down-



MASTERPIECE DOWNTON ABBEY SEASON 3



A CAST OF CHARACTERS

Preceding page, from top:

- > Hugh Bonneville as Robert, Earl of Grantham
- > Elizabeth McGovern as Cora, Countess of Grantham
- > Maggie Smith as Violet, Dowager Countess of Grantham
- > Dan Stevens as Matthew Crawley
- > Michelle Dockery as Lady Mary Crawley
- > Laura Carmichael as Lady Edith Crawley
- > Jessica Brown-Findlay as Lady Sybil Crawley

This page, clockwise from above:

- > Shirley Maclaine as Martha Levinson, Brendan Coyle as John Bates, Joanne Froggatt as Anna

ton Abbey merchandise mania. In addition to the series DVDs, there is an accompanying book, *The Chronicles of Downton Abbey*, as well as a CD, *The Music of Downton Abbey*. You can also adorn yourself with t-shirts that say “Free Bates” or “My other house is an Abbey.”

In case you need reminding, a clock on the Downton Abbey website is counting down the days, hours and minutes until the Season 3 premiere. But rest assured the wait is almost over. Grab your popcorn, and a sherry perhaps, and join PBS Hawaii for Season 3 of Downton Abbey.

DOWNTON ABBEY FANS

“We have just really enjoyed the program and we’re delighted it’s going on for a fourth year. It’s one of the highest quality shows to come out of Britain.”

— Richard Buckley, Kula

“I watched the first two seasons and I thought it was really interesting. I think they did a wonderful job of casting and their costumes were spectacular.”

— Mary Jo Olson, Kailua

“It’s one of those shows that you can’t miss. When Downton Abbey is on I don’t plan anything for Sunday night. I’m mainly looking forward to what happens to Mary and Matthew in Season 3. And I always love Maggie Smith in her role. She’s absolutely amazing and I’m looking forward to Shirley MacLaine joining the cast. I’m sure she’ll throw in some laughs.”

— Shelagh McClenahan, Kihei

“I love Downton Abbey! It has all the elements that fill each of our lives: difficult relationships, falling in love, being disappointed in love, fighting in war, suffering as a result of war, the pain of being part of a lower class, the societal changes that occur because of a Great War. I think the fact that it deals with these universal themes is why it appeals to men and women alike. And the costuming is exquisite! I miss it when the season is over — can’t you show more episodes?!”

— Judy Okawa, Honolulu

Q. Why does it take 6 weeks for delivery of my thank you gift?

A. We do not pre-order gifts. Instead, we order gifts as pledges are received. After we've processed your contribution, please allow up to 6 weeks for gift fulfillment and delivery. Most of the gifts are delivered within a couple of weeks. On rare occasions, gifts can take up to 6 weeks for delivery due to national demand or production delays. If we are aware of such a delay, we will send you a letter with updated delivery information. If you have changed your address, or if 6 weeks have passed and you have not received your gift, please call Viewer Services at (808) 973-1187.

Q. According to the PBS Hawaii magazine, the NOVA program *Ancient Computer* was scheduled, but not shown, on Wed., Nov. 21. For what date and time is it re-scheduled?

A. A few weeks after the magazine went to print, the producers of NOVA scheduled a different, new episode, *Inside the Megastorm*, to replace *Ancient Computer*. The decision was in response to Hurricane Sandy and its aftermath. Although it was too late to change the magazine schedule, we immediately updated our website

schedule as well as the Oceanic cable guide. NOVA's *Ancient Computer* episode will air on February 20, 2013.

Q. What is the difference between PBS Hawaii's annual campaign and NEW HOME campaign?

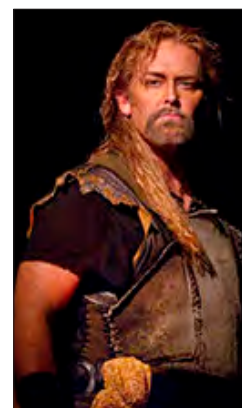
A. PBS Hawaii's annual campaign and NEW HOME Campaign support distinct but equally important funding purposes, both of which are vital to our ability to strengthen our programming and community engagement.

Gifts to PBS Hawaii's annual campaign support the station's normal, year-to-year operating expenses, while the station's NEW HOME Campaign is our multi-year fundraising effort to build our new facility at 315 Sand Island Access Road.

Feedback from a Kona viewer:

I want to thank Leslie Wilcox and PBS Hawaii for re-airing the Ring Cycle (**Great Performances at the Met**) in Hawaii at an earlier hour. It is riveting and thrilling to watch the full episodes. I feel very fortunate that PBS Hawaii is airing these again. I'm thoroughly captivated by this opera, and the Met has done such a stellar production of these.

Please send your questions or comments to: *Viewer Forum*, PBS Hawaii 2350 Dole St. Honolulu, HI 96822 or email@pbshawaii.org.



Jay Hunter Morris as the title character in the Met's production of Wagner's *Siegfried*.



Want to know more about the programs we air?

Every Friday, we distribute by email a free weekly newsletter of program picks and highlights for the upcoming week. The electronic newsletter also contains full descriptions and listings of new and encore primetime programming.

To receive the free **PBS Hawaii Weekly NEWSLETTER**, send your request to: newsletter@pbshawaii.org



SUNDAY MONDAY TUESDAY WEDNESDAY THURSDAY FRIDAY SATURDAY



Please Join, Renew or Contribute
PHONE: (808) 973-2222
TOLL-FREE: (800) 565-5616
ONLINE: PBSHawaii.org
BY MAIL:
PBS Hawaii Advancement Dept. P.O. Box 11599
Honolulu, HI 96828-0599

Grid for Sunday and Monday with program listings for days 1, 2, 3, 4, and 5.

Grid for Tuesday through Thursday with program listings for days 6, 7, 8, 9, 10, 11, and 12.

Grid for Friday and Saturday with program listings for days 13, 14, 15, 16, 17, 18, and 19.

Grid for Saturday and Sunday with program listings for days 20, 21, 22, 23, 24, 25, and 26.

Grid for Sunday and Monday with program listings for days 27, 28, 29, 30, and 31.



PBS HAWAII PRESENTS Searchlight Serenade

PRIMETIME & WEEKEND LISTING SCHEDULE

PBS Hawaii is on the air seven days a week from 5:00 am to midnight. Viewers with cable service also have access to overnight programming which is indicated by **Cable Only**. Viewers with cable service and high-definition (HD) TVs may watch PBS Hawaii in high-definition on Oceanic Time Warner Channel 1010.

CODING:

(e) encore (HD) high-definition

TBA Programming to be announced

When possible, encore broadcasts will be indicated in parentheses. All programs have closed-captioning. Late-breaking events may result in schedule changes. **For more program information and the latest schedules, visit PBSHawaii.org**

Questions about programming changes?

Please call PBS Hawaii toll free:

(800) 238-4847

PBS Hawaii Over-the-Air Broadcast Channels

(KHET) Channel 11.1 • 11.2

(KMEB) Channel 10.1 • 10.2

PBS Hawaii Oceanic Time Warner Cable Channels

Basic Cable: Channel 10

Digital: Channel 90

HD: Channel 1010

PBS Hawaii Kids: Channel 443



GREAT PERFORMANCES *Broadway Musicals: A Jewish Legacy* Tuesday, January 1 | 9:30 pm

1 TUESDAY

7:30 LONG STORY SHORT WITH LESLIE WILCOX

George Ariyoshi: Journey to Washington Place (HD) (e)

8:00 GREAT PERFORMANCES *From Vienna: The New Year's Celebration 2013* The cherished tradition of ringing in the New Year with the Vienna Philharmonic continues. With guest conductor Franz Welser-Möst wielding the baton at the opulent Musikverein, the program features favorite Strauss Family waltzes and the dancers of the Vienna City Ballet. Julie Andrews hosts.

9:30 GREAT PERFORMANCES *Broadway Musicals: A Jewish Legacy* Why has the Broadway musical proven to be such fertile territory for Jewish artists of all kinds? From Broadway's

golden age, names like Irving Berlin, Jerome Kern, the Gershwins, Arthur Laurents, Jerome Robbins, Leonard Bernstein and Stephen Sondheim immediately come to mind. More recently, Broadway babies such as Stephen Schwartz, Marc Shaiman and Andrew Lippa represent a sampling of the Jewish talents who continue to leave their mark on musical theater.

11:00 BREAKFAST SPECIAL 2: REVENGE OF THE OMELETS (e)

Cable Only

Midnight CHARLIE ROSE

1:00 BREAKFAST SPECIAL 2: REVENGE OF THE OMELETS

2:00 LIVE FROM LINCOLN CENTER *One Singular Sensation: Celebrating Marvin Hamlisch*

3:30 DOWNTON ABBEY REVISITED

2 WEDNESDAY

7:30 LEAHEY & LEAHEY (HD)

8:00 NATURE *Broken Tail: A Tiger's Last Journey* (e)

9:00 NOVA *Doomsday Volcanoes* Find out what we can do to prepare for the inevitable disaster following a volcanic eruption in Iceland.

10:00 LIFE ON FIRE *Icelandic Volcanoes* Learn which Icelandic volcano may awaken next and what the consequences of an eruption are likely to be.

11:00 LONG STORY SHORT WITH LESLIE WILCOX

George Ariyoshi: Journey to Washington Place (HD) (e)

11:30 LEAHEY & LEAHEY (e)
Cable Only

Midnight CHARLIE ROSE

- 1:00 LIFE ON FIRE *Icelandic Volcanoes*
2:00 INDEPENDENT LENS *Men Who Swim*
3:00 ANTIQUES ROADSHOW *Orlando, FL*

3 THURSDAY

- 7:30 HIKI NŌ (e)
8:00 INSIGHTS ON PBS HAWAII (HD)
9:00 PBS HAWAII PRESENTS *Great Grandfather's Drum* (e)
10:00 MR. CAO GOES TO WASHINGTON This film is a character study of Congressman Joseph Cao, a Vietnamese American Republican elected by surprise in a historically African American Democratic district in New Orleans.
11:00 GLOBE TREKKER *Mid-Atlantic States* (e)
Cable Only
Midnight CHARLIE ROSE
1:00 ANTIQUES ROADSHOW *Orlando, FL*
2:00 NATURE *Broken Tail: A Tiger's Last Journey*
3:00 NOVA *Doomsday Volcanoes*

4 FRIDAY

- 7:30 WASHINGTON WEEK
8:00 NEED TO KNOW
8:30 THE MCLAUGHLIN GROUP
9:00 GREAT PERFORMANCES *Paul Simon's Graceland Journey* Paul Simon's *Graceland* album, an experiment in cross-cultural collaboration, was also commercially popular, selling 14 million albums worldwide and winning multiple Grammys. Today, it's considered one of the most significant recordings of its time. But why was it so controversial in 1986? In 2011, Simon returned to South Africa to reunite and perform with several of the musicians involved in the original album, capturing a unique homecoming as he reflects on landmark events surrounding the album.

- 11:00 NOBEL PEACE PRIZE CONCERT 2011 (e)
Cable Only

- Midnight CHARLIE ROSE
1:00 MR. CAO GOES TO WASHINGTON
2:00 LIFE ON FIRE *Icelandic Volcanoes*
3:00 THE THIS OLD HOUSE HOUR

5 SATURDAY

- Noon BIZ KID\$ *Debt: The Good, the Bad and the Ugly* (e)
12:30 HIKI NŌ (e)
1:00 INSIGHTS ON PBS HAWAII (HD) (e)
2:00 THE BEST OF THE JOY OF PAINTING *Hidden Winter Moon Oval*
2:30 WOODSMITH SHOP *Top Shop Tips*
3:00 THIS OLD HOUSE *Cambridge 2012: Hearthstone, Waterfall Island Top*
3:30 MOTORWEEK
4:00 MARTHA STEWART'S COOKING SCHOOL

Roasting

- 4:30 COOK'S COUNTRY FROM AMERICA'S TEST KITCHEN *Simple Summer Supper*
5:00 CATHLYN'S KOREAN KITCHEN *Bulgogi: Korean BBQ*
5:30 SIMPLY MING *Ganache with Joanne Chang*
6:00 NHK NEWSLINE
6:10 SPORTS JAPAN
6:40 MEET & SPEAK
6:50 SATOYAMA
7:00 LAND OF THE DRAGON *Chinese Culture and Innovation, Part 2*
7:30 JOSEPH ROSENDO'S TRAVELSCOPE *Sechseläuten: Switzerland's Spring Festival*
8:00 THE WORLD DANCESPORT FEDERATION CHAMPIONSHIPS 2011 *Part 1 of 3* Art, entertainment and sport are combined to create DanceSport, where top dancers from all over the world compete for prestigious titles in the three main ballroom dancing disciplines: Latin, Standard and World Ten.
9:00 RICHARD BANGS' ADVENTURES WITH PURPOSE *Geneva and the Matterhorn: Quest for the Water Castle* Renowned adventurer Richard Bangs explores the Rhone River, Lake Geneva and the Matterhorn regions of Switzerland, the country known since Medieval times as the "water castle" of Europe.
10:00 RICHARD BANGS' ADVENTURES WITH PURPOSE *Costa Rica: Quest for Pura Vida* (e)
11:00 AUSTIN CITY LIMITS *Sonic Youth/The Black Keys* (e)
Cable Only
Midnight INDEPENDENT LENS *Men Who Swim*
1:00 GREAT PERFORMANCES *Paul Simon's Graceland Journey*
3:00 WASHINGTON WEEK
3:30 NEED TO KNOW
- ## 6 SUNDAY
- Noon ANTIQUES ROADSHOW *Orlando, FL, Part 3 of 3* (e)
1:00 THE THIS OLD HOUSE HOUR
2:00 NOVA *Doomsday Volcanoes* (e)
3:00 HIKI NŌ (e)
3:30 LEAHEY & LEAHEY (HD) (e)
4:00 LONG STORY SHORT WITH LESLIE WILCOX *George Ariyoshi: Journey to Washington Place* (HD) (e)
4:30 GROWING BOLDER *Head of the Pack* (e)
5:00 MOYERS & COMPANY
6:00 NHK NEWSLINE
6:30 ITADAKIMASU! DINING WITH THE CHEF
7:00 SECRETS OF HIGHCLERE CASTLE See how life was – and is – lived in Highclere Castle, the stand-in for the fictional Downton Abbey.
8:00 MASTERPIECE CLASSIC *Downton Abbey, Season 3, Part 1 of 7* Wedding guests descend on Downton Abbey, where disasters large and small threaten. One is Cora's freewheeling

PBS Hawaii Insulated Eco-Totes



With a contribution of \$65 or more to PBS Hawaii, you can receive a pair of our new insulated eco-totes.



This black and lime green duo is reusable for every part of your life, from farmers markets to family reunions. The bags stand upright for easy packing and flatten down for storage. The bags measure approximately 15" high x 13" long x 10" wide.

To order, visit us online at PBSHawaii.org or call (808) 973-1187. For Neighbor Islands, call toll-free 1(800) 238-4847.

American mother, who tries to loosen up her in-laws.

10:00 YOUR TURN TO CARE This four-part series explores the challenges of, and offers solutions for, those caring for ailing or aging loved ones.

10:30 TOMORROW BEYOND 3/11 *Keep Loving the Ocean (e)*

11:00 TO THE CONTRARY WITH BONNIE ERBE

11:30 RELIGION & ETHICS NEWSWEEKLY

Cable Only

Midnight GLOBE TREKKER *Mid-Atlantic States*

1:00 GREAT PERFORMANCES *Broadway Musicals: A Jewish Legacy*

2:30 RIBBON OF SAND

3:00 HISTORY DETECTIVES

7 MONDAY

7:30 NA MELE: TRADITIONS IN HAWAIIAN SONG *'Ale'a (e)*

8:00 ANTIQUES ROADSHOW *Corpus Christi, TX, Part 1 of 3*

9:00 MARKET WARRIORS *Antiquing in Walnut, IA*

10:00 POV *Reportero*

11:00 RICHARD BANGS' ADVENTURES WITH PURPOSE *Geneva and the Matterhorn: Quest for the Water Castle (e)*

Cable Only

Midnight CHARLIE ROSE

1:00 SECRETS OF HIGHCLERE CASTLE

2:00 MASTERPIECE CLASSIC *Downton Abbey, Season 3, Part 1 of 7*

8 TUESDAY

7:30 LONG STORY SHORT WITH LESLIE WILCOX *Susanna Moore* Leslie Wilcox talks with Susanna Moore, Punahou graduate and author of the novels *In the Cut* and *The Whiteness of Bones*. Susanna talks about how her mother's mysterious death affected her as a child and into her adult years. (HD)

8:00 HISTORY DETECTIVES

9:00 AMERICAN EXPERIENCE *The Abolitionists, Part One: 1820s-1838*

10:00 FRONTLINE *The Education of Michelle Rhee*

11:00 THE WORLD DANCESPORT FEDERATION CHAMPIONSHIPS 2011

Part 1 of 3 (e)

Cable Only

Midnight CHARLIE ROSE

1:00 FRONTLINE *The Education of Michelle Rhee*

2:00 POV *Reportero*

3:00 ANTIQUES ROADSHOW *Corpus Christi, TX*

9 WEDNESDAY

7:30 LEAHEY & LEAHEY (HD)

8:00 NATURE *Cuba: The Accidental Eden (e)*

9:00 NOVA *Decoding Neanderthals*

10:00 LIFE ON FIRE *Volcano Doctors* Learn how volcanologists try to predict eruptions and protect those who live in the path the Earth's fire.

11:00 LONG STORY SHORT WITH LESLIE WILCOX *Susanna Moore (HD) (e)*

11:30 LEAHEY & LEAHEY (HD) (e)

Cable Only

Midnight CHARLIE ROSE

1:00 LIFE ON FIRE *Volcano Doctors*

2:00 AMERICAN EXPERIENCE *The Abolitionists, Part One: 1820s-1808*

3:00 HISTORY DETECTIVES

10 THURSDAY

7:30 HIKI NŌ

8:00 INSIGHTS ON PBS HAWAII (HD)

9:00 PBS HAWAII PRESENTS *Ninoy Aquino & the Rise of People Power (e)*

10:00 TWO FILMS BY TADASHI NAKAMURA *Pilgrimage* tells how an abandoned WWII concentration camp for Japanese Americans was transformed into a symbol of retrospection and solidarity. *A Song for Ourselves* tells the story of the late Chris Iijima's music, which provided a voice and identity for an entire generation of Asian Americans during the 1970s. (e)

11:00 GLOBE TREKKER *West Texas (e)*

Cable Only

Midnight CHARLIE ROSE

1:00 NATURE *Cuba: The Accidental Eden*

2:00 NOVA *Decoding Neanderthals*

3:00 LIFE ON FIRE *Volcano Doctors*

11 FRIDAY

7:30 WASHINGTON WEEK

8:00 NEED TO KNOW

8:30 THE MCLAUGHLIN GROUP

9:00 THE MIND OF A CHEF *Smoke* Travel with David Chang on a BBQ tour to North Carolina, Texas and Kansas City.

9:30 THE MIND OF A CHEF *Buddies* David Chang cooks and goofs around with his friends Peter Meehan in Japan, and Laurent Gras, Sat Bains and Rene Redzepi in Copenhagen.

10:00 PBS ARTS *The Barnes Collection (e)*

11:00 JOHN PORTMAN: A LIFE OF BUILDING (e)

Cable Only

Midnight CHARLIE ROSE

1:00 THE MIND OF A CHEF *Smoke*

1:30 THE MIND OF A CHEF *Buddies*

2:00 HISTORY DETECTIVES

3:00 THE THIS OLD HOUSE HOUR

12 SATURDAY

Noon BIZ KIDS *Your First Big Purchase (e)*

12:30 HIKI NŌ (e)

1:00 INSIGHTS ON PBS HAWAII (HD) (e)

2:00 THE BEST OF THE JOY OF PAINTING *Valley of Tranquility*



LONG STORY SHORT WITH LESLIE WILCOX *Susanna Moore* Tuesday, January 8 | 7:30 pm



INDEPENDENT LENS *Soul Food Junkies* **Monday, January 14 | 10:00 pm**

- 2:30 ROUGH CUT: WOODWORKING WITH TOMMY MAC** *Coopered Leg Table*
- 3:00 THIS OLD HOUSE** *Cambridge 2012: Secondary Spaces*
- 3:30 MOTORWEEK**
- 4:00 MARTHA STEWART'S COOKING SCHOOL** *Braising*
- 4:30 COOK'S COUNTRY FROM AMERICA'S TEST KITCHEN** *Fun Modern Cakes*
- 5:00 CATHLYN'S KOREAN KITCHEN** *Anju: Korean Bar Foods*
- 5:30 SIMPLY MING** *On the Road in the Azores I*
- 6:00 NHK NEWSLINE**
- 6:10 SPORTS JAPAN**
- 6:40 MEET & SPEAK**
- 6:50 SATOYAMA**
- 7:00 LAND OF THE DRAGON** *Painting and Calligraphy*
- 7:30 JOSEPH ROSENDO'S TRAVELSCOPE** *Dreamin' California's Coast: Malibu to Big Sur*
- 8:00 THE WORLD DANCESPORT FEDERATION CHAMPIONSHIPS 2011** *Part 2 of 3*
- 9:00 RICHARD BANGS' ADVENTURES WITH PURPOSE** *Basel and Lucerne: Quest for the Crossroads* Richard Bangs aims to uncover what turned landlocked Switzerland into the crossroads of the continent, a hub for commerce, ideas, medicines and people.
- 10:00 RICHARD BANGS' ADVENTURES WITH PURPOSE** *Pearl River Delta: Hong Kong, Macau and Guangdong: Quest for Harmony (e)*
- 11:00 AUSTIN CITY LIMITS** *Jack White*

- Cable Only**
- Midnight FRONTLINE** *The Education of Michelle Rhee*
- 1:00 POV** *Reportero*
- 2:00 PBS ARTS** *The Barnes Collection*
- 3:00 WASHINGTON WEEK**
- 3:30 NEED TO KNOW**

13 SUNDAY

- Noon ANTIQUES ROADSHOW** *Corpus Christi, TX, Part 1 of 3*
- 1:00 THE THIS OLD HOUSE HOUR**
- 2:00 NOVA** *Decoding Neanderthals (e)*
- 3:00 HIKI NŌ** (e)
- 3:30 LEAHEY & LEAHEY** (HD) (e)
- 4:00 LONG STORY SHORT WITH LESLIE WILCOX** *Susanna Moore (HD) (e)*
- 4:30 GROWING BOLDER** *Find Your Fans (e)*
- 5:00 MOYERS & COMPANY**
- 6:00 MASTERPIECE CLASSIC** *Downton Abbey, Season 3, Part 1 of 7 (e)*
- 8:00 MASTERPIECE CLASSIC** *Downton Abbey, Season 3, Part 2 of 7* The fate of Downton Abbey hinges on a letter from a dead man. Edith and Sir Anthony face their own fateful moment. Mrs. Hughes confronts a crisis.
- 9:00 FAKE OR FORTUNE?** *Monet, Monet, Monet (e)*
- 10:00 YOUR TURN TO CARE**
- 10:30 TOMORROW BEYOND 3/11** *Camping in Moominvalley*
- 11:00 TO THE CONTRARY WITH BONNIE ERBE**

- 11:30 RELIGION & ETHICS NEWSWEEKLY**
- Cable Only**
- Midnight POV** *Reportero*
- 1:00 PBS ARTS** *The Barnes Collection*
- 2:00 HISTORY DETECTIVES**
- 3:00 MARKET WARRIORS** *Antiquing in Walnut, IA*

14 MONDAY

- 7:30 NA MELE: TRADITIONS IN HAWAIIAN SONG** *Amy Hanaiali'i Gilliom and Willie K (e)*
- 8:00 ANTIQUES ROADSHOW** *Corpus Christi, TX, Part 2 of 3*
- 9:00 MARKET WARRIORS** *Antiquing in Chicago, IL*
- 10:00 INDEPENDENT LENS** *Soul Food Junkies*
Filmmaker Byron Hurt sets out to learn more about the soul food tradition and its relevance to black cultural identity. Hurt's exploration was inspired by his father's lifelong love affair with the high-fat, calorie-rich traditional soul food diet and his unwillingness to give it up even in the face of a life-threatening health crisis.
- 11:00 RICHARD BANGS' ADVENTURES WITH PURPOSE** *Basel and Lucerne: Quest for the Crossroads (e)*
- Cable Only**
- Midnight CHARLIE ROSE**
- 1:00 MASTERPIECE CLASSIC** *Downton Abbey, Season 3, Part 2 of 7*
- 2:00 MARKET WARRIORS** *Antiquing in Chicago, IL*
- 3:00 LIFE ON FIRE** *Volcano Doctors*

15 TUESDAY

7:30 **LONG STORY SHORT WITH LESLIE**

WILCOX *George Ariyoshi: Shaping the Future (HD) (e)*

8:00 **PIONEERS OF TELEVISION** *Funny Ladies*

This episode features the first standup comedienne to appear on television, including legends Phyllis Diller and Joan Rivers. It also looks at Lucille Ball's breakthrough on *I Love Lucy* and the sitcom stars who followed, including Mary Tyler Moore, Betty White and Marla Gibbs. The episode covers television's most enduring variety star, Carol Burnett, and features interviews with contemporary actresses including Tina Fey and Margaret Cho.

9:00 **AMERICAN EXPERIENCE** *The*

Abolitionists, Part Two: 1838-1854

10:00 **FRONTLINE** *Inside Obama's Presidency*

As Barack Obama is sworn in for his second term, the program takes a probing look at the first four years of his presidency, examining the president's key decisions and the experiences that will inform his second term.

11:00 **THE WORLD DANCESPORT**

FEDERATION CHAMPIONSHIPS 2011

Part 2 of 3 (e)

Cable Only

Midnight CHARLIE ROSE

1:00 **FRONTLINE** *Inside Obama's Presidency*

2:30 **INDEPENDENT LENS** *Soul Food Junkies*

3:00 **ANTIQUES ROADSHOW** *Corpus Christi, TX*

16 WEDNESDAY

7:30 **LEAHEY & LEAHEY (HD)**

8:00 **NATURE** *Cracking the Koala Code (e)*

9:00 **NOVA** *Ice Age Death Trap (e)*

10:00 **LIFE ON FIRE** *The Surprise Salmon*

In Alaska, the fresh water that feeds the rivers is snowmelt from North America's highest mountains and most active volcanoes. Time and again, they erupt and poison the rivers. Scientists have only just begun to piece together what might have happened nearly 2,000 years ago, when one race of salmon faced the death of their natal river and were forced back to the open ocean on an exceptional adventure.

11:00 **LONG STORY SHORT WITH LESLIE WILCOX**

George Ariyoshi: Shaping the Future (HD) (e)

11:30 **LEAHEY & LEAHEY (HD) (e)**

Cable Only

Midnight CHARLIE ROSE

1:00 **LIFE ON FIRE** *The Surprise Salmon*

2:00 **AMERICAN EXPERIENCE** *The*

Abolitionists, Part Two: 1838-1854



PIONEERS OF TELEVISION *Funny Ladies* Tuesday, January 15 | 8:00 pm

3:00 **PIONEERS OF TELEVISION** *Funny Ladies*

17 THURSDAY

7:30 **HIKI NŌ (e)**

8:00 **INSIGHTS ON PBS HAWAII (HD)**

9:00 **PBS HAWAII PRESENTS** *Ma Ka Malu Ali'i: The Legacy of Hawaii's Ali'i*

10:00 **SEISEN! THE RISE AND FALL OF THE**

JAPANESE EMPIRE 1905-1945 *Part 1 of 2*

This two-part series chronicles the dramatic story of a proud and ambitious warrior nation, and how Japan, ultimately, paid a terrible price for its audacity. The documentary explores Japan's militaristic history in the first half of the 20th century, from its victory in the Russo-Japanese war to its defeat in World War II.

11:00 **GLOBE TREKKER** *Puerto Rico (e)*

Cable Only

Midnight CHARLIE ROSE

1:00 **NATURE** *Cracking the Koala Code*

2:00 **NOVA** *Ice Age Death Trap*

3:00 **LIFE ON FIRE** *The Surprise Salmon*

18 FRIDAY

7:30 **WASHINGTON WEEK**

8:00 **NEED TO KNOW**

8:30 **THE MCLAUGHLIN GROUP**

9:00 **GREAT PERFORMANCES AT THE MET**

L'Elisir d'Amore Anna Netrebko and Matthew Polenzani star as the fickle Adina and her besotted Nemorino in Bartlett Sher's new production of one of opera's great comic gems. Mariusz Kwiecien is the blustery sergeant Belcore and Ambrogio Maestri is Dulcamara, the loveable quack and dispenser of the elixir. Maurizio Benini conducts.

11:30 **MEL LEIPZIG: EVERYTHING IS PAINTABLE**

Cable Only

- Midnight CHARLIE ROSE**
- 1:00 FRONTLINE** *Inside Obama's Presidency*
- 2:00 GLOBE TREKKER** *Puerto Rico*
- 3:00 THE THIS OLD HOUSE HOUR**

19 SATURDAY

- Noon BIZ KID\$** *What's Up with the Stock Market? (e)*
 - 12:30 HIKI NŌ (e)**
 - 1:00 INSIGHTS ON PBS HAWAII (HD) (e)**
 - 2:00 THE BEST OF THE JOY OF PAINTING** *Seascape Fantasy*
 - 2:30 ROUGH CUT: WOODWORKING WITH TOMMY MAC** *Workbench*
 - 3:00 THIS OLD HOUSE** *Cambridge 2012: The Big Finish*
 - 3:30 MOTORWEEK**
 - 4:00 MARTHA STEWART'S COOKING SCHOOL** *Poaching*
 - 4:30 COOK'S COUNTRY FROM AMERICA'S TEST KITCHEN** *Upscale Meat and Potatoes*
 - 5:00 CATHLYN'S KOREAN KITCHEN** *Boyangsik: Medicinal Korean Foods*
 - 5:30 SIMPLY MING** *Pan Sauces with Norman Van Aken*
 - 6:00 NHK NEWSLINE**
 - 6:10 SPORTS JAPAN**
 - 6:40 MEET & SPEAK**
 - 6:50 SATOYAMA**
 - 7:00 LAND OF THE DRAGON** *The Game of Go and the Guqin*
 - 7:30 JOSEPH ROSENDO'S TRAVELSCOPE** *San Miguel de Allende: Celebrating in the Heart of Mexico*
 - 8:00 THE WORLD DANCESPORT FEDERATION CHAMPIONSHIPS 2011** *Part 3 of 3*
 - 9:00 A NORWAY PASSAGE: THE MOST BEAUTIFUL VOYAGE** This program is a voyage along Norway's spectacular coastline, featuring deep fjords, crashing waterfalls, mountains rising from the sea, and fishing villages along this stunning coast.
 - 10:00 DREAMLAND (e)**
 - 11:00 AUSTIN CITY LIMITS** *Rodrigo y Gabriela*
- Cable Only**
- Midnight FRONTLINE** *Inside Obama's Presidency*
 - 1:00 INDEPENDENT LENS** *Soul Food Junkies*
 - 2:00 PIONEERS OF TELEVISION** *Funny Ladies*
 - 3:00 WASHINGTON WEEK**
 - 3:30 NEED TO KNOW**

20 SUNDAY

- Noon ANTIQUES ROADSHOW** *Corpus Christi, TX, Part 3 of 3 (e)*
- 1:00 THE THIS OLD HOUSE HOUR**
- 2:00 NOVA** *Ice Age Death Trap (e)*
- 3:00 HIKI NŌ (e)**

- 3:30 LEAHEY & LEAHEY (HD) (e)**
 - 4:00 LONG STORY SHORT WITH LESLIE WILCOX** *George Ariyoshi: Shaping the Future (HD) (e)*
 - 4:30 GROWING BOLDER** *Boomer Babes (e)*
 - 5:00 MOYERS & COMPANY**
 - 6:00 NHK NEWSLINE**
 - 6:30 ITADAKIMASU! DINING WITH THE CHEF**
 - 7:00 MASTERPIECE CLASSIC** *Downton Abbey, Season 3, Part 2 of 7 (e)*
 - 8:00 MASTERPIECE CLASSIC** *Downton Abbey, Season 3, Part 3 of 7* Two social revolutions arrive at Downton Abbey: the Irish civil war and the fight for women's suffrage. A mysterious conspiracy keeps Anna and Bates apart.
 - 9:00 FAKE OR FORTUNE?** *Lost Picture*
 - 10:00 YOUR TURN TO CARE**
 - 10:30 TOMORROW BEYOND 3/11**
 - 11:00 TO THE CONTRARY WITH BONNIE ERBE**
 - 11:30 RELIGION & ETHICS NEWSWEEKLY**
- Cable Only**
- Midnight RIBBON OF SAND**
 - 12:30 GREAT PERFORMANCES AT THE MET** *L'Elisir d'Amore*
 - 3:00 MARKET WARRIORS** *Antiquing in Chicago, IL*

21 MONDAY

- 7:30 NA MELE: TRADITIONS IN HAWAIIAN SONG** *Maunaula (e)*
 - 8:00 ANTIQUES ROADSHOW** *Corpus Christi, TX, Part 3 of 3*
 - 9:00 MARKET WARRIORS** *Antiquing in New Milford, CT*
 - 10:00 INDEPENDENT LENS** *Beauty is Embarrassing*
 - 11:30 MEL LEIPZIG: EVERYTHING IS PAINTABLE**
- Cable Only**
- Midnight CHARLIE ROSE**
 - 1:00 MASTERPIECE CLASSIC** *Downton Abbey, Season 3, Part 3 of 7*
 - 2:00 MARKET WARRIORS** *Antiquing in New Milford, CT*
 - 3:00 LIFE ON FIRE** *The Surprise Salmon*

22 TUESDAY

- 7:30 LONG STORY SHORT WITH LESLIE WILCOX** *Tin Myaing Thein: Different Shores* Leslie Wilcox talks with Dr. Tin Myaing Thein, women's advocate, community organizer and executive director of the Pacific Gateway Center. When Dr. Thein was an infant, her family evaded



GREAT PERFORMANCES AT THE MET *L'Elisir d'Amore* Friday, January 18 | 9:00 pm



LONG STORY SHORT WITH LESLIE WILCOX Tuesday | 7:30 pm
January 22: *Tin Myaing Thein: Different Shores* **January 29:** *Tin Myaing Thein: Forthright and Strong*

Japanese armies that were occupying Burma (now Myanmar) during World War II. In the first of two episodes, Dr. Thein recalls her idyllic, post-war life in the Burmese town of Kalaw and how she made her way to Hawaii. (HD)

- 8:00 PIONEERS OF TELEVISION** *Primetime Soaps* *Dallas* and *Dynasty* kicked off the nighttime soap frenzy in the late 1970s and spun off the long-lasting series *Knots Landing*. Sometimes forgotten is the genre's antecedent: 1964's *Peyton Place*, which starred Mia Farrow and Ryan O'Neal. Interviewees in this episode include Larry Hagman, Joan Collins, Linda Evans, Diahann Carroll, Linda Gray, Patrick Duffy, Michele Lee, Joan Van Ark and Donna Mills.
- 9:00 AMERICAN EXPERIENCE** *The Abolitionists, Part Three: 1854-Emancipation and Victory*
- 10:00 FRONTLINE** *The Untouchables*
- 11:00 THE WORLD DANCESPORT FEDERATION CHAMPIONSHIPS 2011** *Part 3 of 3 (e)*

- Cable Only**
- Midnight CHARLIE ROSE**
- 1:00 FRONTLINE** *The Untouchables*
- 2:00 INDEPENDENT LENS** *Beauty is Embarrassing*
- 3:30 FORT NIAGARA: THE STRUGGLE FOR A CONTINENT**

23 WEDNESDAY

- 7:30 LEAHEY & LEAHEY** (HD)
- 8:00 NATURE** *Attenborough's Life Stories: Life on Camera*
- 9:00 NOVA** *Rise of the Drones*
- 10:00 LIFE ON FIRE** *Phoenix Temple*
- 11:00 LONG STORY SHORT WITH LESLIE WILCOX** *Tin Myaing Thein: Different Shores* (HD) (e)
- 11:30 LEAHEY & LEAHEY** (HD) (e)
- Cable Only**
- Midnight CHARLIE ROSE**
- 1:00 LIFE ON FIRE** *Phoenix Temple*
- 2:00 AMERICAN EXPERIENCE** *The Abolitionists, Part Three: 1854-Emancipation and Victory*
- 3:00 PIONEERS OF TELEVISION** *Primetime Soaps*

24 THURSDAY

- 7:30 HIKI NŌ**
- 8:00 INSIGHTS ON PBS HAWAII** (HD)
- 9:00 PBS HAWAII PRESENTS** *Under a Jarvis Moon* (e)
- 10:00 SEISEN! THE RISE AND FALL OF THE JAPANESE EMPIRE 1905-1945** *Part 2 of 2*
- 11:00 GLOBE TREKKER** *Caribbean Islands: St. Lucia, Martinique and Montserrat*
- Cable Only**
- Midnight CHARLIE ROSE**
- 1:00 NATURE** *Attenborough's Life Stories: Life on Camera*
- 2:00 NOVA** *Rise of the Drones*

3:00 LIFE ON FIRE *Phoenix Temple*

25 FRIDAY

- 7:30 WASHINGTON WEEK**
- 8:00 NEED TO KNOW**
- 8:30 THE MCLAUGHLIN GROUP**
- 9:00 SHAKESPEARE UNCOVERED** *Macbeth* with *Ethan Hawke*
- 10:00 SHAKESPEARE UNCOVERED** *The Comedies* with *Joely Richardson*
- 11:00 STAGESTRUCK: CONFESSIONS FROM SUMMER STOCK** (e)
- Cable Only**
- Midnight CHARLIE ROSE**
- 1:00 SHAKESPEARE UNCOVERED** *The Comedies* with *Joely Richardson*
- 2:00 PIONEERS OF TELEVISION** *Primetime Soaps*
- 3:00 THE THIS OLD HOUSE HOUR**

26 SATURDAY

- Noon BIZ KID\$** *Crash Course on Starting a Business* (e)
- 12:30 HIKI NŌ** (e)
- 1:00 INSIGHTS ON PBS HAWAII** (HD) (e)
- 2:00 THE BEST OF THE JOY OF PAINTING** *Autumn Fantasy*
- 2:30 ROUGH CUT: WOODWORKING WITH TOMMY MAC** *Barley Twist Lamp*
- 3:00 THIS OLD HOUSE** *Essex 2012/13: A Cottage in the Wood*
- 3:30 MOTORWEEK**
- 4:00 MARTHA STEWART'S COOKING SCHOOL** *Frying*
- 4:30 COOK'S COUNTRY FROM AMERICA'S TEST KITCHEN** *Thrill of the Grill*
- 5:00 CATHLYN'S KOREAN KITCHEN** *Cha and Namul for Health and Beauty*
- 5:30 SIMPLY MING** *On the Road in the Azores II*
- 6:00 NHK NEWSLINE**
- 6:10 SPORTS JAPAN**
- 6:40 MEET & SPEAK**
- 6:50 SATOYAMA**
- 7:00 LAND OF THE DRAGON** *Beijing Impressions*
- 7:30 JOSEPH ROSENDO'S TRAVELSCOPE** *Ontario, Canada's Niagara Peninsula: Toronto and Beyond*
- 8:00 CHIHULY OUTSIDE** This film covers nearly half a century of glass artist Dale Chihuly's epic outdoor installations. It traces the development of *Mille Fiori*, a 56-foot "garden of glass" first exhibited in 2008 in San Francisco, and his most recent work, *Chihuly Garden and Glass*, at Seattle's iconic Space Needle.
- 9:00 PAINTING BOLINAS** The town of Bolinas, California serves as the living backdrop for this film about a 90-year-old artist, Peter Lee Brownlee, his zany friends and a woman who wants to save his paintings from ruin-ation.
- 10:00 AN EVENING WITH DAVE GRUSIN**
- 11:00 AUSTIN CITY LIMITS** *Norah Jones/Kat Edmonson*

Cable Only

Midnight FRONTLINE *The Untouchables*

1:00 INDEPENDENT LENS *Beauty is Embarrassing*

2:30 RIBBON OF SAND

3:00 WASHINGTON WEEK

3:30 NEED TO KNOW

27 SUNDAY

Noon ANTIQUES ROADSHOW *Corpus Christi, TX, Part 3 of 3 (e)*

1:00 THE THIS OLD HOUSE HOUR

2:00 NOVA *Rise of the Drones (e)*

3:00 HIKI NŌ (e)

3:30 LEAHEY & LEAHEY (HD) (e)

4:00 LONG STORY SHORT WITH LESLIE WILCOX *Tin Myaing Thein: Different Shores (HD) (e)*

4:30 GROWING BOLDER *On a Mission*

5:00 MOYERS & COMPANY

6:00 NHK NEWSLINE

6:30 ITADAKIMASU! DINING WITH THE CHEF

7:00 MASTERPIECE CLASSIC *Downton Abbey, Season 3, Part 3 of 7 (e)*

8:00 MASTERPIECE CLASSIC *Downton Abbey, Season 3, Part 4 of 7* The Crawley family faces its severest test yet. Meanwhile, new faces try to fit into the tight-knit circle of servants. New evidence turns up in a baffling case.

9:00 FAKE OR FORTUNE? *The Genuine Article (e)*

10:00 YOUR TURN TO CARE (e)

10:30 TOMORROW BEYOND 3/11 *Children of a Town of Reconstruction*

11:00 TO THE CONTRARY WITH BONNIE ERBE

11:30 RELIGION & ETHICS NEWSWEEKLY

Cable Only

Midnight SHAKESPEARE UNCOVERED *Macbeth with Ethan Hawke*

1:00 SHAKESPEARE UNCOVERED *The Comedies with Joely Richardson*

2:00 PIONEERS OF TELEVISION *Primetime Soaps*

3:00 MARKET WARRIORS *Antiquing in New Milford, CT*

28 MONDAY

7:30 NA MELE: TRADITIONS IN HAWAIIAN SONG *Makaha Sons (e)*

8:00 ANTIQUES ROADSHOW *Boston, MA, Part 1 of 3*

9:00 MARKET WARRIORS *Antiquing in Burlington, KY (e)*

10:00 INDEPENDENT LENS *The Revisionaries*

11:00 CHIHULY OUTSIDE (e)

Cable Only

Midnight CHARLIE ROSE

1:00 MASTERPIECE CLASSIC *Downton Abbey, Season 3, Part 4 of 7*

2:00 MARKET WARRIORS *Antiquing in Burlington, KY*

3:00 LIFE ON FIRE *Phoenix Temple*

29 TUESDAY

7:30 LONG STORY SHORT WITH LESLIE WILCOX

Tin Myaing Thein: Forthright and Strong Leslie Wilcox continues her conversation with Dr. Tin Myaing Thein. She talks about meeting her future husband, Jack Reynolds, and fellow Burmese activist Aung San Suu Kyi. She also describes her current passion: assisting low-income residents, immigrants and refugees at the Pacific Gateway Center. (HD)

8:00 PIONEERS OF TELEVISION *Superheroes*

This episode crosses many eras: *Superman* in the 1950s, *Batman* in the 60s, *Wonder Woman* and *The Incredible Hulk* in the 70s and *The Greatest American Hero* in the 80s. The episode features in-depth interviews with Adam West, Burt Ward, Julie Newmar, Lynda Carter, Lou Ferrigno, William Katt and others. It also includes comments from Robert Culp, about his show *The Greatest American Hero*, recorded just days before he passed away.

9:00 AMERICAN EXPERIENCE *Henry Ford*

11:00 PAINTING BOLINAS (e)

Cable Only

Midnight CHARLIE ROSE

1:00 GLOBE TREKKER *Caribbean Islands: St. Lucia, Martinique and Montserrat*

2:00 INDEPENDENT LENS *The Revisionaries*

3:00 ANTIQUES ROADSHOW *Boston, MA*

30 WEDNESDAY

7:30 LEAHEY & LEAHEY (HD)

8:00 NATURE *Attenborough's Life Stories: Understanding the Natural World*

9:00 NOVA *Who Killed Lindbergh's Baby?*

10:00 LIFE ON FIRE *Ash Runners*

11:00 LONG STORY SHORT WITH LESLIE WILCOX *Tin Myaing Thein: Forthright and Strong (HD) (e)*

11:30 LEAHEY & LEAHEY (HD) (e)

Cable Only

Midnight CHARLIE ROSE

1:00 LIFE ON FIRE *Ash Runners*

2:00 ANTIQUES ROADSHOW *Boston, MA*

3:00 PIONEERS OF TELEVISION *Superheroes*

31 THURSDAY

7:30 HIKI NŌ

8:00 INSIGHTS ON PBS HAWAII (HD)

9:00 PBS HAWAII PRESENTS *Searchlight Serenade: Big Bands in the WWII Japanese American Incarceration Camps* More than 120,000 Japanese Americans were forced to live in incarceration camps during World War II. As people endeavored to create a sense of normalcy during their incarceration, many detainees still enjoyed the popular music of the day – swing. This film tells the stories of nine detainees who created a soulful escape for themselves and their fellow prisoners. Their accounts are accompanied by evocative animation created from woodcuts and drawings. See page 16.

10:00 SPACE SHUTTLE COLUMBIA: MISSION OF HOPE

11:00 GLOBE TREKKER *Bangladesh (e)*

Cable Only

Midnight CHARLIE ROSE

1:00 NOVA *Space Shuttle Disaster*

2:00 AMERICAN EXPERIENCE *Henry Ford*



CHIHULY OUTSIDE Saturday, January 26 | 8:00 pm



"If we didn't have them to prove our loyalty, I don't know what would've happened. We owe them so much."

— Joy Teraoka, who was relocated to an internment camp in Wyoming during World War II, on the heroic efforts of the 442nd Brigade

PBS Hawaii Presents

Searchlight Serenade: Big Bands in the World War II Japanese American Incarceration Camps

Thursday, January 31 | 9:00 pm

Earlier this year, PBS Hawaii filmed an interview with Joy Takeshita Teraoka, who was sent with her family to the Heart Mountain Japanese American internment camp in Wyoming in 1942. Portions of her interview appear in **Searchlight Serenade: Big Bands in the World War II Japanese American Incarceration Camps**, produced by KEET, the PBS station in Eureka, California. Joy recently sat down with PBS Hawaii again — coincidentally, on Pearl Harbor Remembrance Day — to watch the documentary and reflect on her days at Heart Mountain.

How old were you when you were sent to Heart Mountain?

Well, at the very beginning [in 1942], I was 15.

What was it like for you after you left Heart Mountain?

I guess it's sort of like being in the Army. You can't talk to others about the horrors that you saw, unless that person was actually involved in it, too, and understood your feelings. I know my high school teacher in Washington, D.C. assigned us a composition. She said to write about something unusual, an unusual experience in your life and I knew what she meant. I knew she wanted me to write about [living in an internment camp]. But I couldn't. But after I graduated, some girl asked me if I could write about the whole experience and I was able to release that. I think the first time I saw a documentary on the

camp that was put out by one of the insurance companies, that's the first time that it hit me. I was home alone and I just started crying. This must have been in the Fifties. It really doesn't bother me now, but when you get old, you get teary-eyed fast. [laughs] Nostalgic tears. Like when you see films about the 442 [Japanese American infantry].

What makes you cry? What comes to mind?

What [the 442] did for us. If we didn't have them to prove our loyalty, I don't know what would've happened. We owe them so much.

Did all the memories come flooding back while watching *Searchlight Serenade*?

They did. Luckily, I was young, so the trauma wasn't as great as it was for the older people who really lost their livelihood that they worked for, for so many years. The nostalgia chokes me up.

What did you think when you first saw Amy's [Uyeki, *Searchlight Serenade* associate producer and animator] animations in the documentary?

Very charming and amazing. As an art student, I understand woodblocks and for different scenes, you have to carve different blocks, especially for the different colors and different gradations of grays... I commend her.

What's a specific memory that jumps out from watching the animations?

My mother was looking through the window of the mess hall during a dance one night. I was dancing with my boyfriend cheek to cheek. Boy, did I get it when I got home! [laughs] My mother was so embarrassed because she was with her friend. Cheek to cheek was quite indecent in those days. [laughs]



Joy Teraoka, circa 1942.



PBS Hawaii staff writer Liberty Peralta sat down recently with Joy Teraoka to watch **Searchlight Serenade**, and to reflect on what life was like growing up as a Japanese American during World War II.



5:00 am	SUPER WHY
5:30 am	DINOSAUR TRAIN
6:00 am	DANIEL TIGER'S NEIGHBORHOOD
6:30 am	FETCH! WITH RUFF RUFFMAN
7:00 am	ARTHUR
7:30 am	THE ELECTRIC CO.
8:00 am	WILD KRATTS
8:30 am	WORDGIRL
9:00 am	MARTHA SPEAKS
9:30 am	SID THE SCIENCE KID
10:00 am	SESAME STREET
11:00 am	BARNEY AND FRIENDS
11:30 am	CLIFFORD THE BIG RED DOG
NOON	CURIOUS GEORGE
12:30 pm	THE CAT IN THE HAT
1:00 pm	SUPER WHY
1:30 pm	DINOSAUR TRAIN
2:00 pm	DANIEL TIGER'S NEIGHBORHOOD
2:30 pm	FETCH! WITH RUFF RUFFMAN
3:00 pm	ARTHUR
3:30 pm	THE ELECTRIC CO.
4:00 pm	WILD KRATTS
4:30 pm	WORDGIRL
5:00 pm	MARTHA SPEAKS
5:30 pm	SID THE SCIENCE KID
6:00 pm	SESAME STREET
7:00 pm	BARNEY AND FRIENDS
7:30 pm	CLIFFORD THE BIG RED DOG
8:00 pm	CURIOUS GEORGE
8:30 pm	THE CAT IN THE HAT
9:00 pm	SUPER WHY
9:30 pm	DINOSAUR TRAIN
10:00 pm	DANIEL TIGER'S NEIGHBORHOOD
10:30 pm	FETCH! WITH RUFF RUFFMAN
11:00 pm	ARTHUR
11:30 pm	THE ELECTRIC CO.
Midnight	WILD KRATTS
12:30 am	WORDGIRL
1:00 am	MARTHA SPEAKS
1:30 am	SID THE SCIENCE KID
2:00 am	SESAME STREET
3:00 am	BARNEY AND FRIENDS
3:30 am	CLIFFORD THE BIG RED DOG
4:00 am	CURIOUS GEORGE
4:30 am	THE CAT IN THE HAT

	MONDAY-FRIDAY	SATURDAY	SUNDAY
5am	Clifford the Big Red Dog	Cyberchase	Clifford's Puppy Days
5:30	Barney & Friends	Angelina Ballerina	Bob the Builder
6am	Sesame Street	Mister Rogers' Neighborhood	Maya & Miguel
6:30		WordWorld	Mister Rogers' Neighborhood
7am	Curious George	Daniel Tiger's Neighborhood	Sesame Street
7:30	The Cat in the Hat	Martha Speaks	
8am	Super Why!	Caillou	Super Why!
8:30	Dinosaur Train	Clifford the Big Red Dog	Daniel Tiger's Neighborhood
9am	Daniel Tiger's Neighborhood	The Cat in the Hat	Barney & Friends
9:30	Sid the Science Kid	Wild Kratts	Sid the Science Kid
10am	WordWorld	Thomas & Friends	Arthur
10:30	Caillou	Dinosaur Train	WordGirl
11am	Sesame Street	Fetch! with Ruff Ruffman	Curious George
11:30		The Electric Co.	Wild Kratts
noon	Arthur	Biz Kid\$	Antiques Roadshow
12:30	Martha Speaks	HIKI NŌ	
1pm	NHK Newslines	Insights on PBS Hawaii	The This Old House Hour
1:30	NHK World		
2pm	NHK Newslines	The Best of The Joy of Painting	NOVA
2:30	NHK World	Woodsmith Shop/Rough Cut	
3pm	Wild Kratts	This Old House	HIKI NŌ
3:30	WordGirl	MotorWeek	Leahey & Leahey
4pm	Fetch! with Ruff Ruffman	Martha Stewart's Cooking School	Long Story Short
4:30	The Electric Co.	Cook's Country	Growing Bolder
5pm	NHK World	Cathlyn's Korean Kitchen	Moyers & Company
5:30	NBR	Simply Ming	
6pm	BBC World News	NHK Newslines	NHK Newslines
6:30	PBS NewsHour	NHK World	Itadakimasu!

For the most current program and schedule information, please visit our website at PBSHawaii.org

NHK WORLD

	MONDAY	TUESDAY	WEDNESDAY	THURSDAY	FRIDAY
1:00pm	NHK Newslines	NHK Newslines	NHK Newslines	NHK Newslines	NHK Newslines
1:30	Tokyo Fashion Express	Imagine-nation	Great Gear	Science View	Somewhere Street
2:00pm	NHK Newslines	NHK Newslines	NHK Newslines	NHK Newslines	NHK Newslines
2:30	Journeys in Japan	Tokyo Eye	Begin Japanology	JIB Program	NHK World Selection
5:00pm	Asia 7 Days	Asia Biz Forecast	Venetia in Kyoto	Asian Voices	Asia Insight

Local airing of NHK programming is made possible in part by the generous support of:
Atsuhiko and Ina Goodwin Tateuchi Foundation • Cronin Fried Sekiya Kekina & Fairbanks

Carlsmith Ball LLP Joanne L. Grimes, Partner



Joanne Grimes is an attorney with the local law firm Carlsmith Ball LLP and a longtime connoisseur of PBS Hawaii programs.

“Long Story Short, PBS NewsHour if I get home in time, Washington Week on Fridays

and Great Performances,” said Joanne, when asked of her favorite PBS Hawaii shows. “I used to regularly watch **Sesame Street** with my three children, and even remember when Maria and Luis realized that they were more than just friends!”

This year, Joanne’s personal and professional lives are much intertwined – in a good way. Carlsmith Ball, the state’s oldest and one of its largest law firms, is partnering with PBS Hawaii to support the local broadcast of **Downton Abbey**.

“I appreciate how Julian Fellowes gets all the details just right,” said Joanne, a die-hard fan of the show’s creator. “The transitioning roles for servants and for women remind us of the narrow choices available a century ago. And in fact, the haves vs. have-nots dynamic remains relevant today.”

Like her employer, Joanne is a major supporter of PBS Hawaii, our mission, and our programs. *Mahalo* for your support!

Become a Community Partner today!

Contact Ben Nishimoto at bnishimoto@pbshawaii.org or call (808) 973-0292.



NEW HOME Campaign

Your public television station, PBS Hawaii, is facing a challenge. The University of Hawaii at Manoa needs to use the campus space that we’ve leased for decades for its own academic programs.

Fortunately, we found a good place to re-locate – at the corner of Nimitz Highway and Sand Island Access Road.

We now own the property outright.

So far, public support has brought us more than halfway to our \$30 million fundraising goal for design and construction of our new facility.

Your generous contribution moves us closer to creating a permanent home for this trusted forum for civil discourse, solid journalism,

arts and culture, and life-long learning. Your gift also provides a gathering place for **HIKI NŌ**, PBS Hawaii’s national award-winning partnership with the students and teachers of Hawaii.

To learn more about our new home and make a tax-deductible gift, please visit PBSHawaii.org/newhome or call (808) 955-0500.

An artist’s rendering of PBS Hawaii’s **HIKI NŌ** Media Innovation Center, located at the future site of PBS Hawaii

PBS Hawaii Insulated *Eco-Totes*

Please mail your contribution to:

PBS Hawaii, P.O. Box 11599, Honolulu, HI 96828

Name: _____

Address: _____

City: _____ State: _____ Zip: _____

Phone: _____

E-mail: _____

VISA Mastercard American Express Check _____

Card No.: _____ Exp.: _____

Signature: _____

No gift needed. I would like my entire donation to go toward quality programming for the community.

Please check here if you **do not** want to receive the Aloha Diners Club Card with your donation of \$65 or more.

Please check here if you **do not** want to receive the PBS Hawaii Magazine.

Please check here if you would like to receive the PBS Hawaii e-magazine. Please include your e-mail.

My favorite programs on PBS Hawaii are:



- \$1000 Presidents Circle
- \$500 Broadcasters Circle
- \$250 Directors Club
- \$120 Friend
- \$85 Family
- \$65 PBS Hawaii Insulated Eco-Totes
- \$35 Individual*
- Other amount: \$ _____

* For a gift of \$35 or more, you can choose to receive our monthly PBS Hawaii Magazine by mail or e-mail.

For questions, please call PBS Hawaii Viewer Services at (808) 973-1187. Mahalo!

HIKI NŌ

PRESENTED ON PBS HAWAII BY
BANK OF HAWAII AND HMSA

MAJOR FUNDING

Corporation for Public Broadcasting
The Clarence T.C. Ching Foundation
Hawaii Community Foundation
John S. and James L. Knight Foundation
Wallace Alexander Gerbode Foundation
W.K. Kellogg Foundation
...and supporters like you

ADDITIONAL SUPPORT

Atherton Family Foundation
Bays Lung Rose & Holma
tw telecom
Mākaha Studios
Stupski Family Fund of the
Hawaii Community Foundation
The Frank M. and Gertrude R. Doyle
Foundation, Inc.
Freeman Family Fund of the
Hawaii Community Foundation
Thomas J. Long Foundation
George Mason Fund of the
Hawaii Community Foundation
KTA Super Stores, in memory of Koichi
and Taniyo Taniguchi, founders of KTA
Super Stores and K.Taniguchi, Ltd.
Fred Baldwin Memorial Foundation
Friends of Hawaii Charities
MEDB Ke Alahele Education Fund
Rev. Takie Okumura Family Fund of the
Hawaii Community Foundation

PBS Hawaii COMMUNITY PARTNERS

BUSINESS AND FOUNDATION SUPPORT

- | | |
|--|---|
| ABC Stores | Hawaiian Telcom |
| Bank of Hawaii | Island Pacific Academy |
| The Cades Foundation | John R. Halligan Charitable Fund |
| Cades Schutte LLP | Marians Island Wide Catering |
| Carlsmith Ball LLP | McInerney Foundation |
| Cronin Fried Sekiya Kekina & Fairbanks | John & Clifford Mirikitani Foundation |
| Cookie Corner | NetEnterprise |
| First Hawaiian Bank | Pictures Plus |
| First Insurance Company of Hawaii | Pigtails & Crewcuts |
| First Insurance Company of Hawaii
Charitable Foundation | Piliani Kope Farm |
| Girl Scouts of Hawaii | R. M. Towill Corporation |
| Halekulani Corporation | Ruby Tuesday Hawaii |
| Hawaii Association for the Education of
Young Children | Seven-Eleven Hawaii, Inc. |
| Hawaii Credit Union League,
on behalf of Hawaii's Credit Unions | Takitani & Agaran Law Corporation |
| Hawaii Government Employees Assoc. | Atsuhiko and Ina Goodwin
Tateuchi Foundation |
| Hawaii Medical Service Association | University of Hawaii Professional
Assembly |
| Hawaii News Now | University of Hawaii at Manoa
School of Communications |
| Hawaiian Airlines | The Utopia Foundation |

Periodicals Dated Material

COMING NEXT MONTH

About Us

PBS Hawaii advances learning and discovery through storytelling that profoundly touches people's lives. We bring the world to Hawaii and Hawaii to the world.

Major support of the station comes from the people and businesses of Hawaii.

PBS Hawaii

2350 Dole Street
Honolulu, HI 96822

(808) 973-1000
Toll Free: (800) 238-4847

Website

PBSHawaii.org

Weekly Newsletter

Send request to:
newsletter@pbshawaii.org

Comments/Suggestions

email@pbshawaii.org



PBS Hawaii, a member of the Public Broadcasting Service (PBS), is a community-supported, non-commercial public television station broadcasting throughout the state of Hawaii.

PBS HAWAII magazine (ISSN: 1946-0813) is published monthly by the Hawaii Public Television Foundation, dba PBS Hawaii. Periodicals postage PAID at Honolulu, Hawaii and at additional entry mailing offices in Hilo, Kahului, Kailua-Kona, Kaunakakai, and Lihue. POSTMASTER: Send address changes to PBS Hawaii, Advancement Department, 2350 Dole Street, Honolulu, HI 96822.



Na Mele
Pure Caz
The Brothers Cazimero